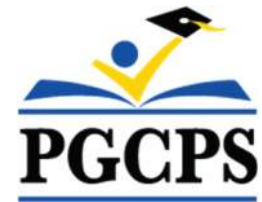




PGCPS . **ENGAGE . DESIGN . BUILD . COMMUNICATE** . PGCPS



# BRANDYWINE ACADEMY

PROJECT PLANNING COMMITTEE MEETING #5 | JANUARY 21, 2026





## Agenda

- Design Recap
- Construction Updates
- Open Discussion
- Contact

# Design Recap

- No design changes since last meeting.
- Construction continues.
- Interior design presented to PGCPS recently. Update to be provided.
- Future meetings to be planned for any schools that did not attend the first 2.
- Continue coordination with school regarding staff breakroom and teacher workroom configurations

# Interior Design

- Collaboration Spaces

Image shows Brent but Brandywine is similar.



# Interior Design

- Grades PK-K

Image shows Brent but Brandywine is similar.



# Interior Design

- Grades 1-3

Image shows Brent but Brandywine is similar.



# Interior Design

- Grades 4-5

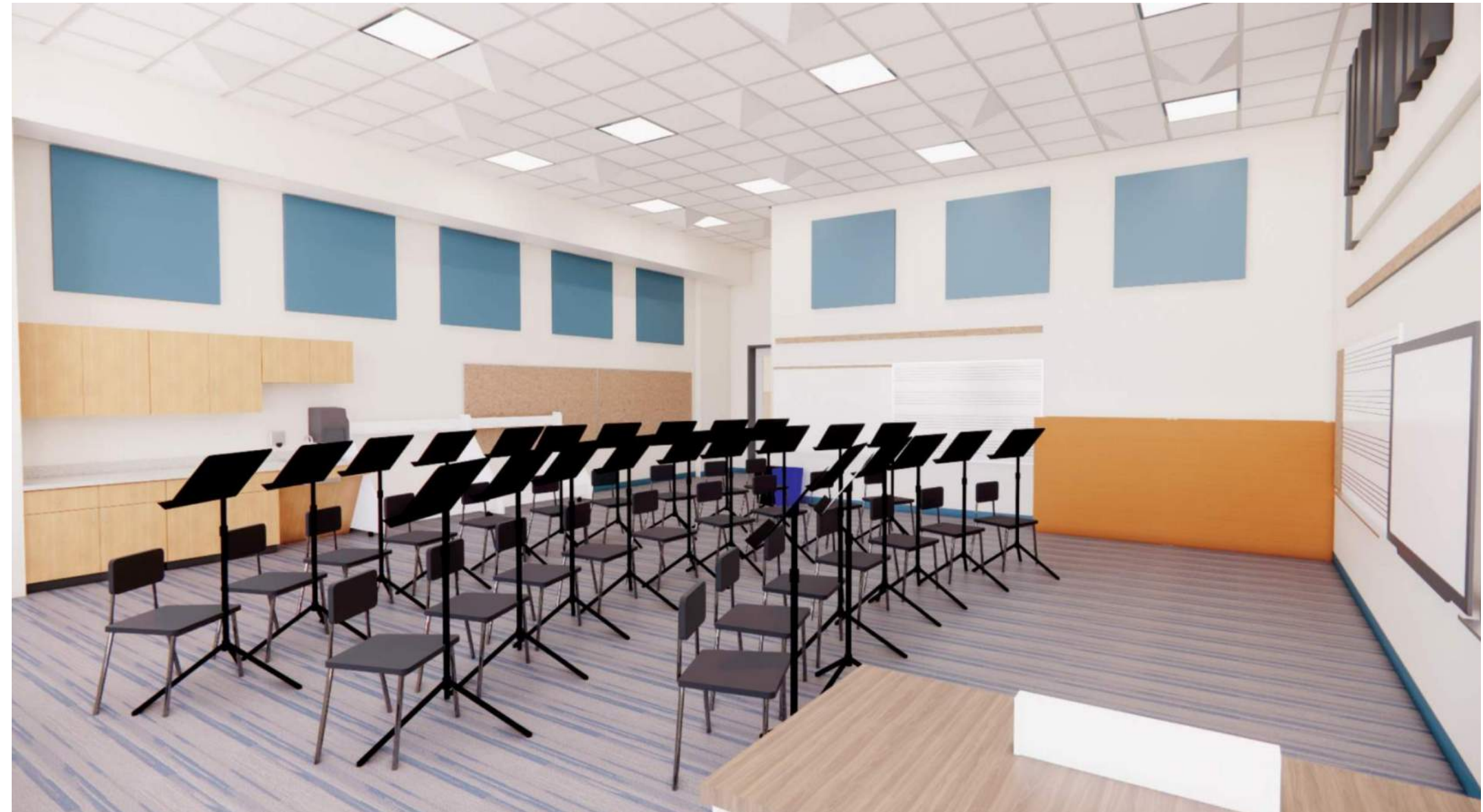
Image shows Brent but Brandywine is similar.



# Interior Design

- Music Room

Image shows Brent but Brandywine is similar.



# Staff Break Room (2)

## SPACE REQUIREMENTS - C. Administrative Areas

<b>Space Name:</b>	Staff Break Room
<b>Space ID</b>	205
<b>RDS No.</b>	24



### SPATIAL RELATIONSHIPS/ ADJACENCY CRITERIA

<b>Primary Adjacency</b>	Adult Restrooms (Can be included in space)
<b>Secondary Adjacency</b>	Near Dining (As Feasible)
<b>Other</b>	Distribute throughout building; one per floor if possible; provide access from corridor

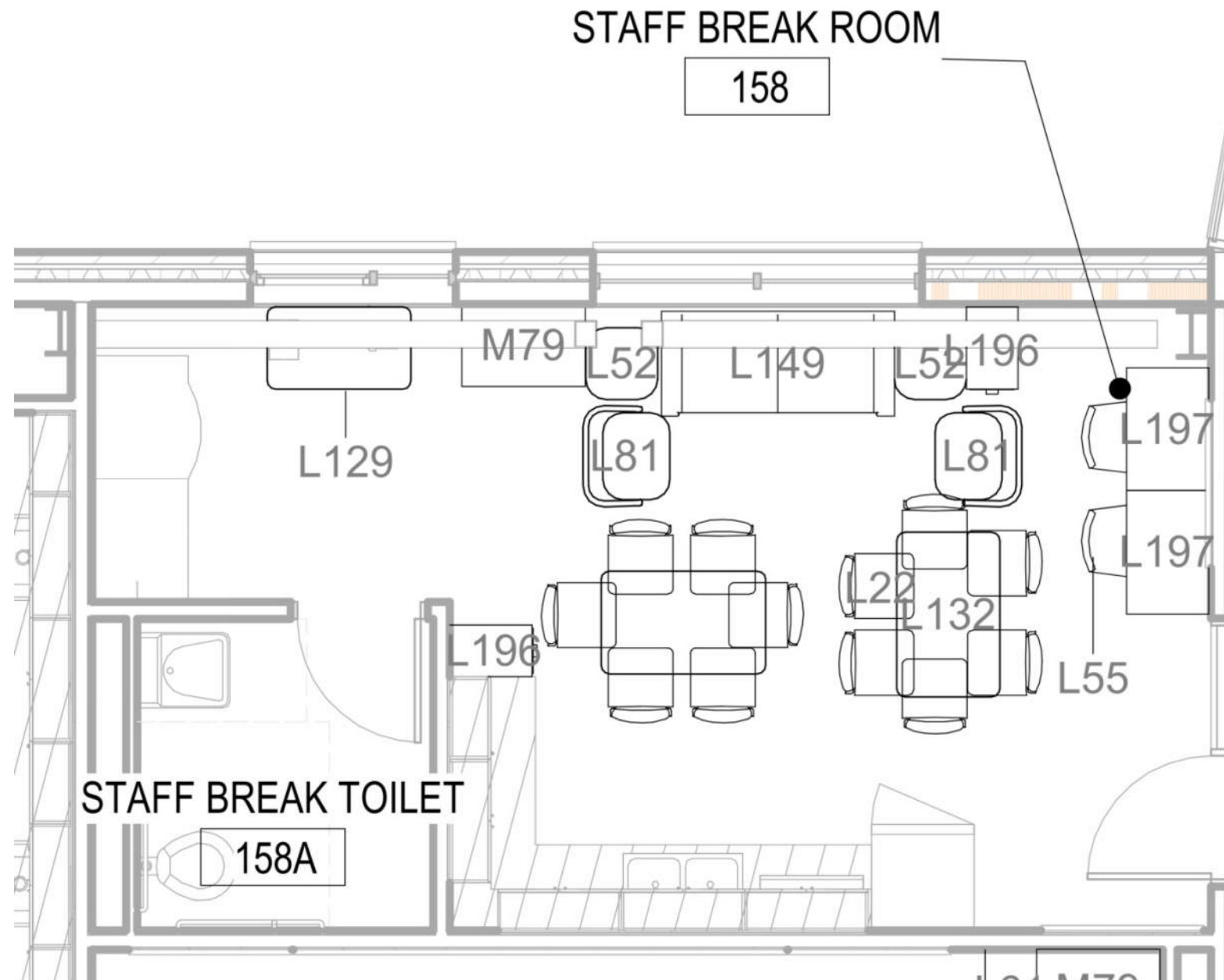
### PROGRAM ACTIVITIES

To provide as an area for staff to relax and prepare for classes;  
 Prepare lessons using computer, video, and other resources;  
 Interacting with peers; Eating; Relaxing; Using the telephone

# Staff Break Room



# Staff Break Room - **Current**



## FURNITURE / CASEWORK / MILLWORK

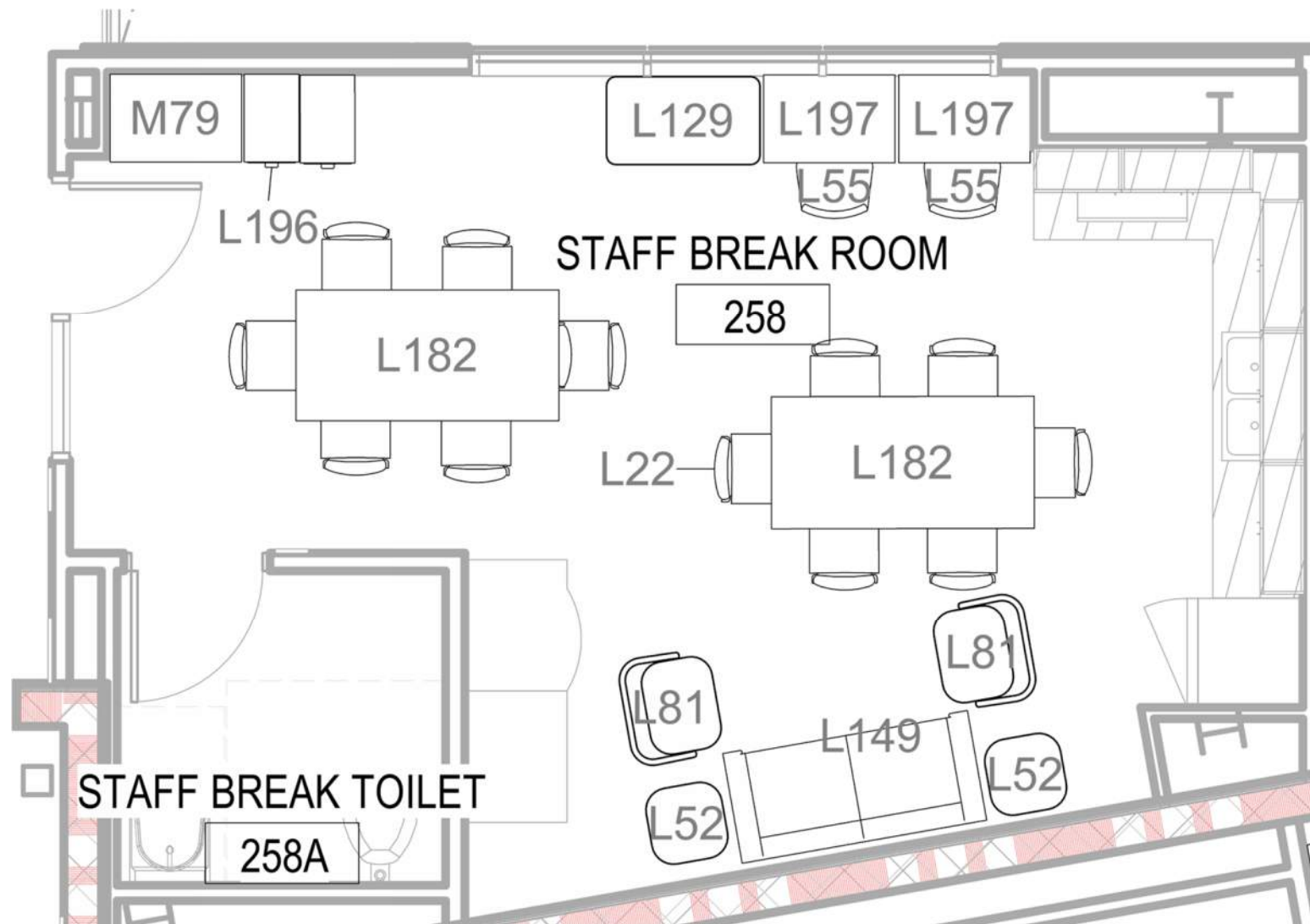
Furniture	Qty	Tag	Note
Rectangular Table	2	L132	Height-adjustable
Chair	12	L22	
Sofa	1	L149	
End Tables	2	L52	
Lounge Chair	2-3	L81	Review w/ staff
File Cabinet	2-3	L196	Lockable; 4 drawers; for "floating" teachers
Workstation	2-3	L197	
Ergonomic Chair	2-3	L55	
Printer Table	1	L129	24" D x 42" W x 29" H
Casework/Millwork	Qty	Tag	Note
Base Cabinets	1	M18	Lockable; w/countertop & sink
Wall Cabinets	1	M83	Lockable; Above sink
Teacher Wardrobe	1	M79	36"W x 24"D x 72"H; w/coat rod; lockable; shelving one side

## EQUIPMENT

	Qty	Tag	Note
Vending Machine	2	E127	(1) snack & (1) beverage
Refrigerator	1	E95	
Microwave Oven	1	E64	
Phone	1	E79	
Network Printer	1	E71	

- Confirm how YOU use room.
- Review furniture and equipment.
- Cross out anything not needed.
- Suggest anything missing (must replace something).

# Staff Break Room - **Current**



## FURNITURE / CASEWORK / MILLWORK

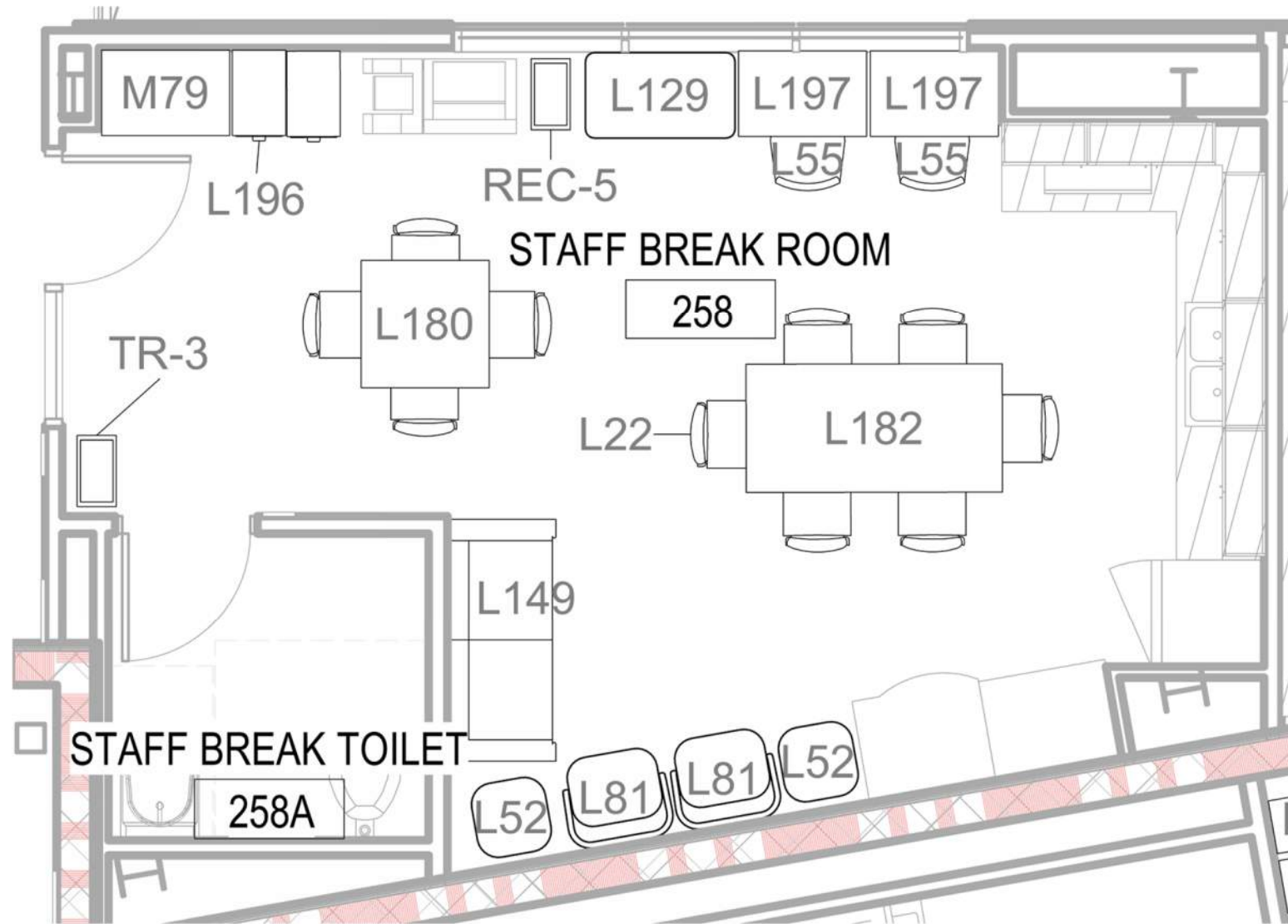
Furniture	Qty	Tag	Note
Rectangular Table	2	L132	Height-adjustable
Chair	12	L22	
Sofa	1	L149	
End Tables	2	L52	
Lounge Chair	2-3	L81	Review w/ staff
File Cabinet	2-3	L196	Lockable; 4 drawers; for "floating" teachers
Workstation	2-3	L197	
Ergonomic Chair	2-3	L55	
Printer Table	1	L129	24" D x 42" W x 29" H
Casework/Millwork	Qty	Tag	Note
Base Cabinets	1	M18	Lockable; w/countertop & sink
Wall Cabinets	1	M83	Lockable; Above sink
Teacher Wardrobe	1	M79	36"W x 24"D x 72"H; w/coat rod; lockable; shelving one side

## EQUIPMENT

	Qty	Tag	Note
Vending Machine	2	E127	(1) snack & (1) beverage
Refrigerator	1	E95	
Microwave Oven	1	E64	
Phone	1	E79	
Network Printer	1	E71	

- Confirm how YOU use room.
- Review furniture and equipment.
- Cross out anything not needed.
- Suggest anything missing (must replace something).

# Staff Break Room - Proposed



## FURNITURE / CASEWORK / MILLWORK

Furniture	Qty	Tag	Note
Rectangular Table	<del>2</del>	<del>L182</del>	Height-adjustable
Chair	8-10	L22	
Sofa	1	L149	
End Tables	2	L52	
Lounge Chair	2	2-3 L81	Review w/ staff
File Cabinet	2	2-3 L196	Lockable; 4 drawers; for "floating" teachers
Workstation	2	2-3 L197	
Ergonomic Chair	2	2-3 L55	
Printer Table	1	L129	24" D x 42" W x 29" H
Casework/Millwork	Qty	Tag	Note
Base Cabinets	1	M18	Lockable; w/countertop & sink
Wall Cabinets	1	M83	Lockable; Above sink
Teacher Wardrobe	1	M79	36"W x 24"D x 72"H; w/coat rod; lockable; shelving one side

## EQUIPMENT

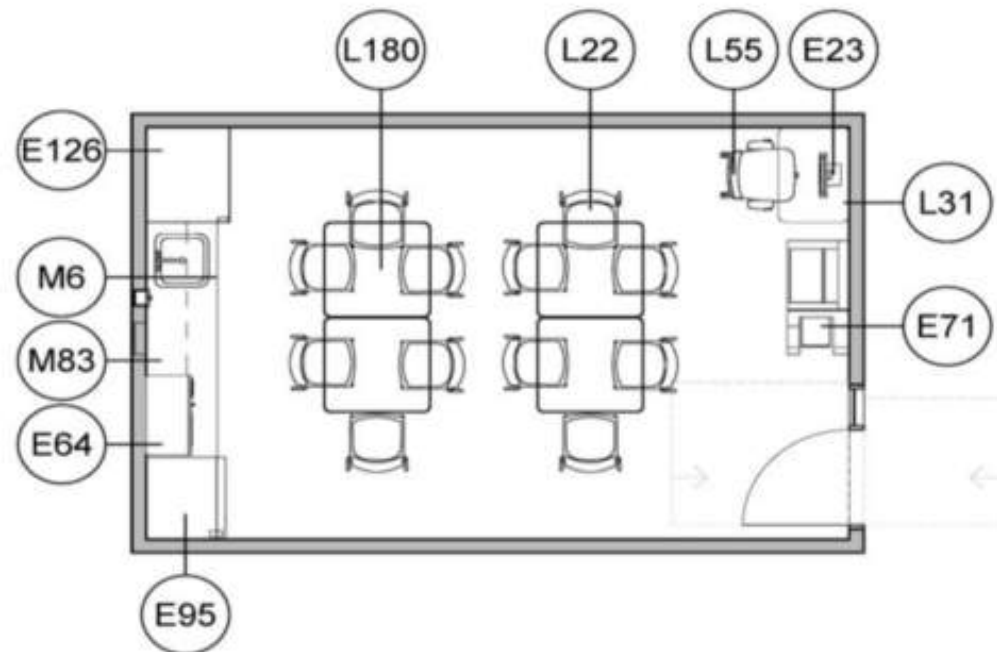
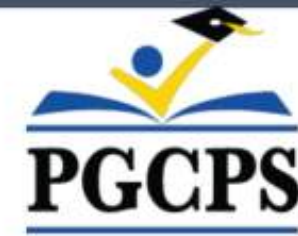
	Qty	Tag	Note
Vending Machine	2	E127	(1) snack & (1) beverage
Refrigerator	1	E95	
Microwave Oven	1	E64	
Phone	1	E79	
Network Printer	1	E71	

- There are 2 total rooms
- This is a typical room.
- We can customize each of the 2 rooms or apply the same logic.

# Teacher Support Room – Wet (3)

## SPACE REQUIREMENTS - B. Learning Areas

Space Name: Teacher Support Room - "Wet"  
 Space ID: 202  
 RDS No.: 12.1



### SPATIAL RELATIONSHIPS/ ADJACENCY CRITERIA

<b>Primary Adjacency</b>	Located within Grade Level areas; One per grade level community
<b>Secondary Adjacency</b>	Located near individual restrooms and Access from Corridor
<b>Other</b>	Supply/ Storage Room

### PROGRAM ACTIVITIES

- To provide an area for teacher collaboration and individual work
- Prepare lessons using computer, video, and other resources; Grade papers; Eating lunch
- Enter and access data; Store files

# Teacher Support Room - Wet



Teacher Support (Wet) – First Floor

Teacher Support (Wet) – Second Floor



First Floor

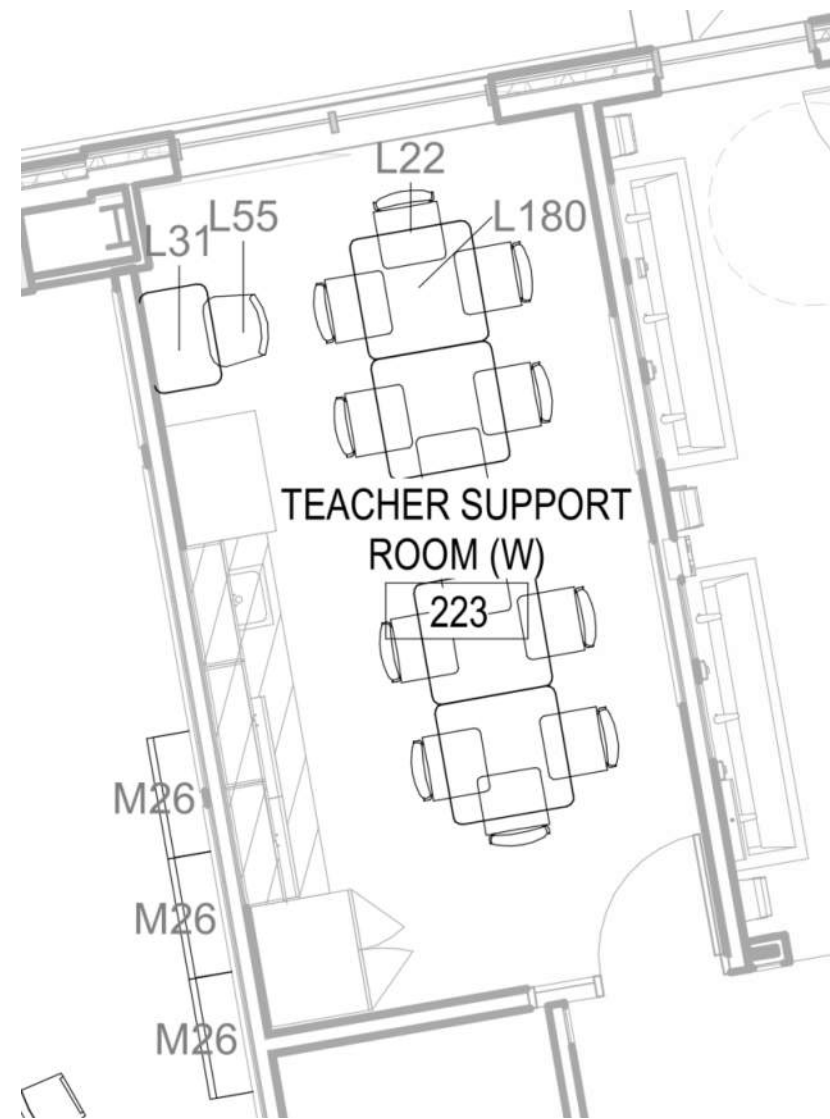
Second Floor



Note: Design is subject to change



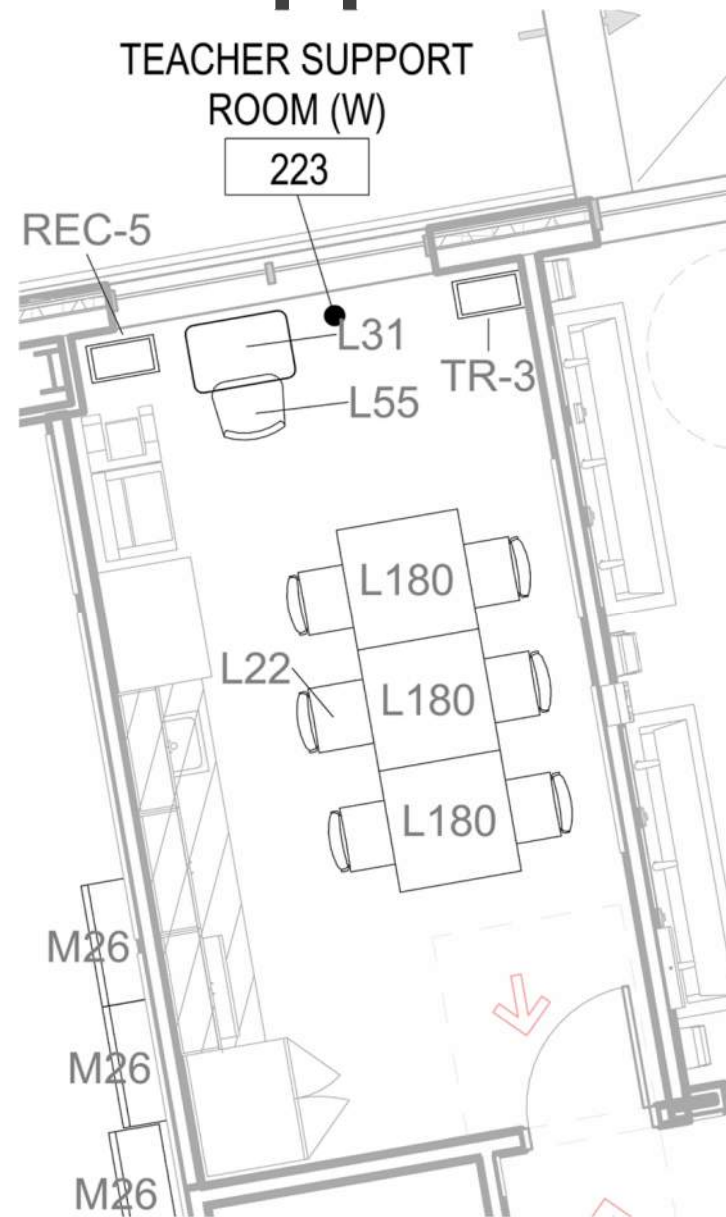
# Teacher Support Room – Wet - **Current**



FURNITURE / CASEWORK / MILLWORK			
Furniture	Qty	Tag	Note
Work Table	4	L180	36" D x 36" W x 29" H; with casters
Chair	12	L22	
Computer Stations	1	L31	
Ergonomic Chair	1	L55	

- Confirm how YOU use room.
- Review furniture and equipment.
- Cross out anything not needed.
- Suggest anything missing (must replace something).

# Teacher Support Room – Wet - **Proposed**



## FURNITURE / CASEWORK / MILLWORK

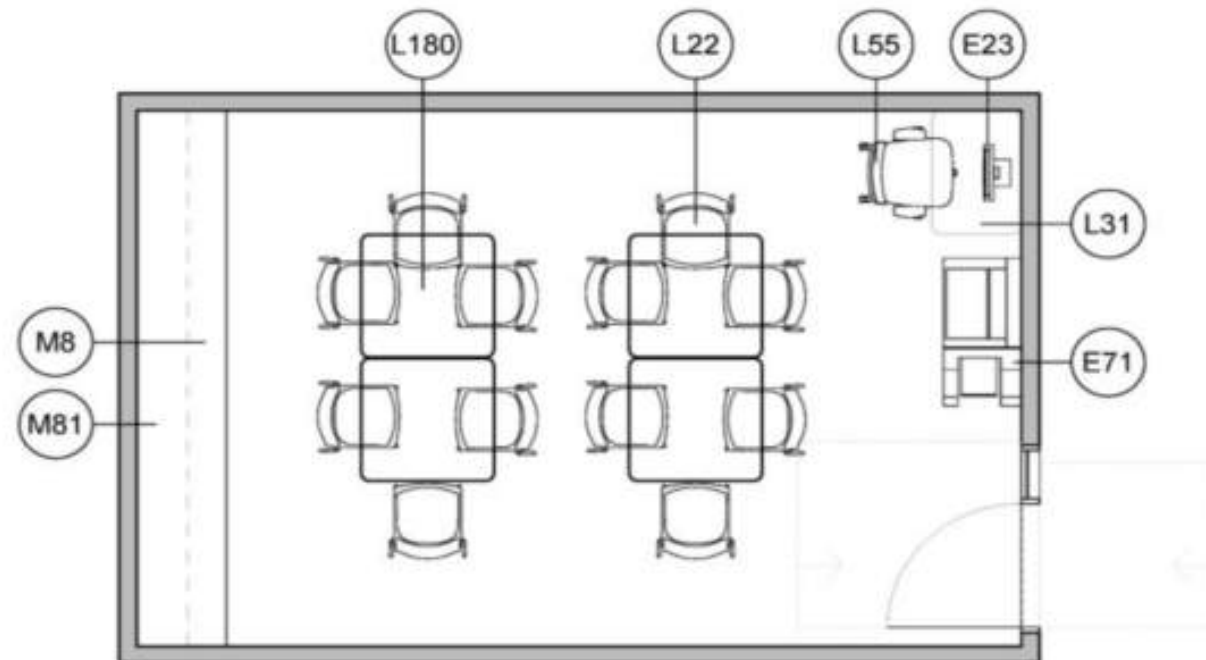
Furniture	Qty	Tag	Note
Work Table	<del>4</del> 3-4	L180	36" D x 36" W x 29" H; with casters
Chair	<del>12</del> 6-8	L22	
Computer Stations	1	L31	
Ergonomic Chair	1	L55	

- There are 3 total rooms
- This is a typical room.
- We can customize each of the 3 rooms or apply the same logic.

# Teacher Support Room – Dry (2)

## SPACE REQUIREMENTS - B. Learning Areas

<b>Space Name:</b>	Teacher Support Room - "Dry"
<b>Space ID</b>	202
<b>RDS No.</b>	12.2



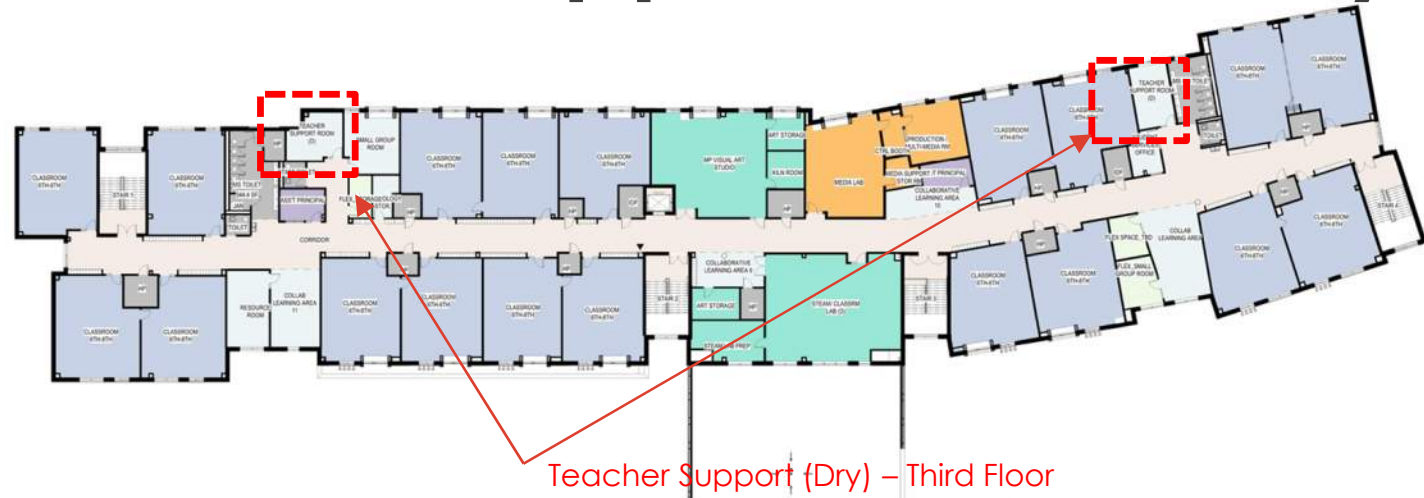
### SPATIAL RELATIONSHIPS/ ADJACENCY CRITERIA

<b>Primary Adjacency</b>	Located within Grade Level areas; One per grade level community
<b>Secondary Adjacency</b>	Located near individual restrooms and Access from Corridor
<b>Other</b>	Supply/ Storage Room

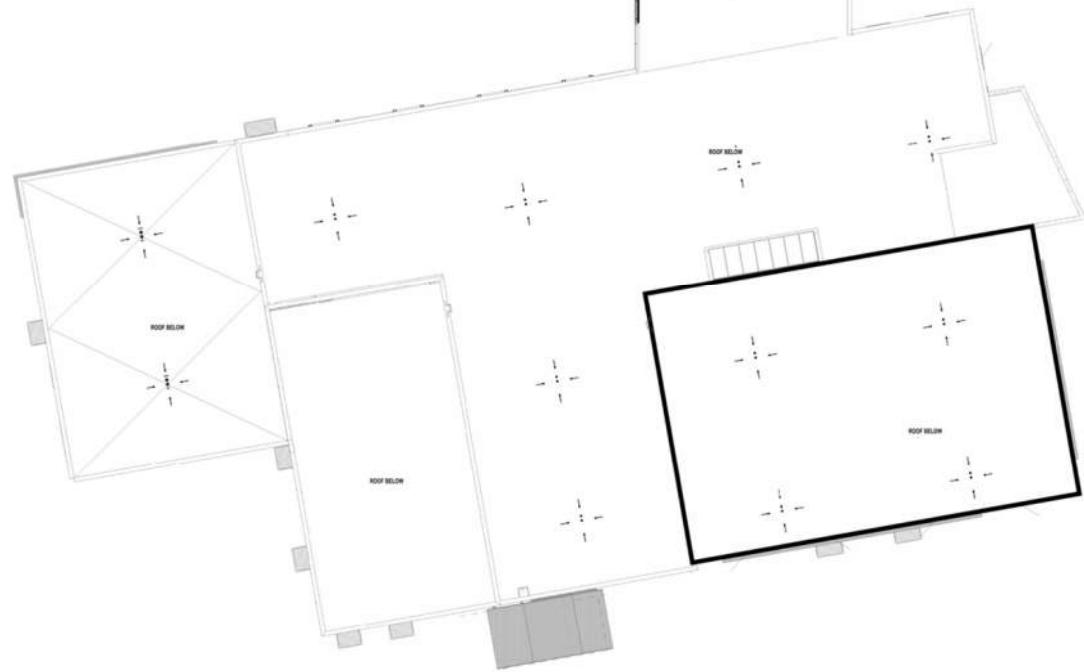
### PROGRAM ACTIVITIES

To provide an area for teacher collaboration and individual work; Prepare lessons using computer, video, and other resources; Grade papers; Eating lunch; Enter and access data; Store files

# Teacher Support Room - Dry

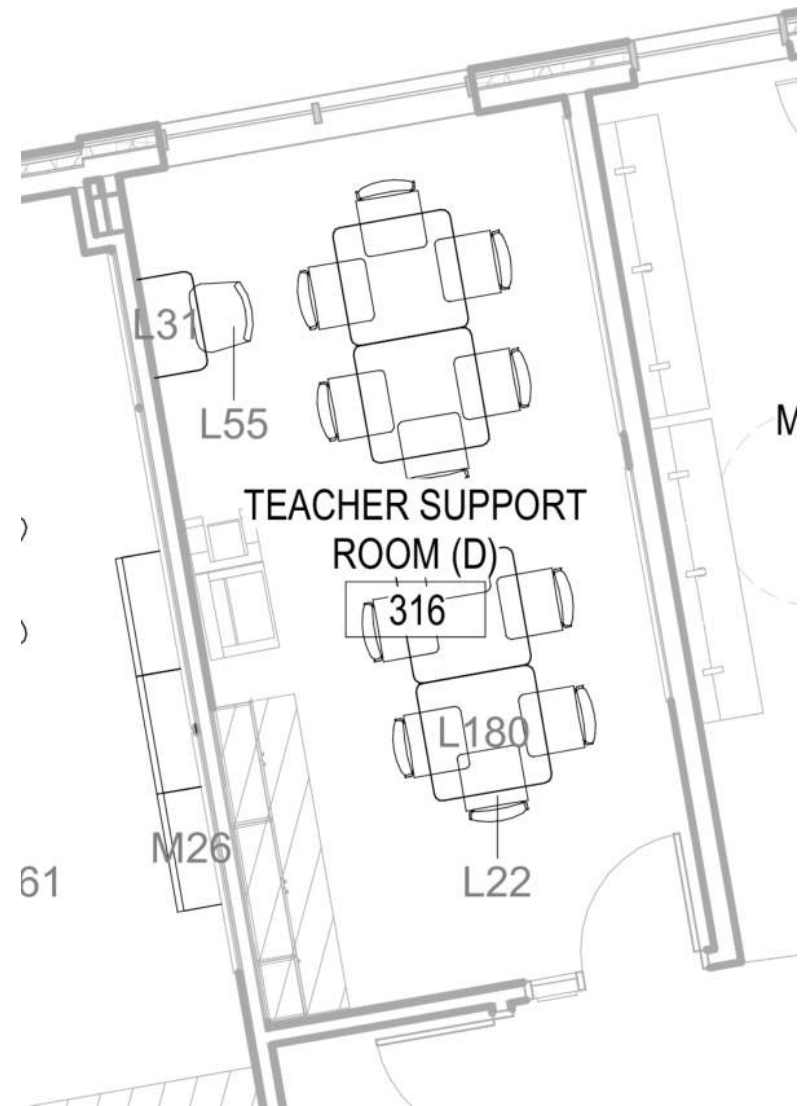


Teacher Support (Dry) - Third Floor



Third Floor

# Teacher Support Room – Dry - **Current**

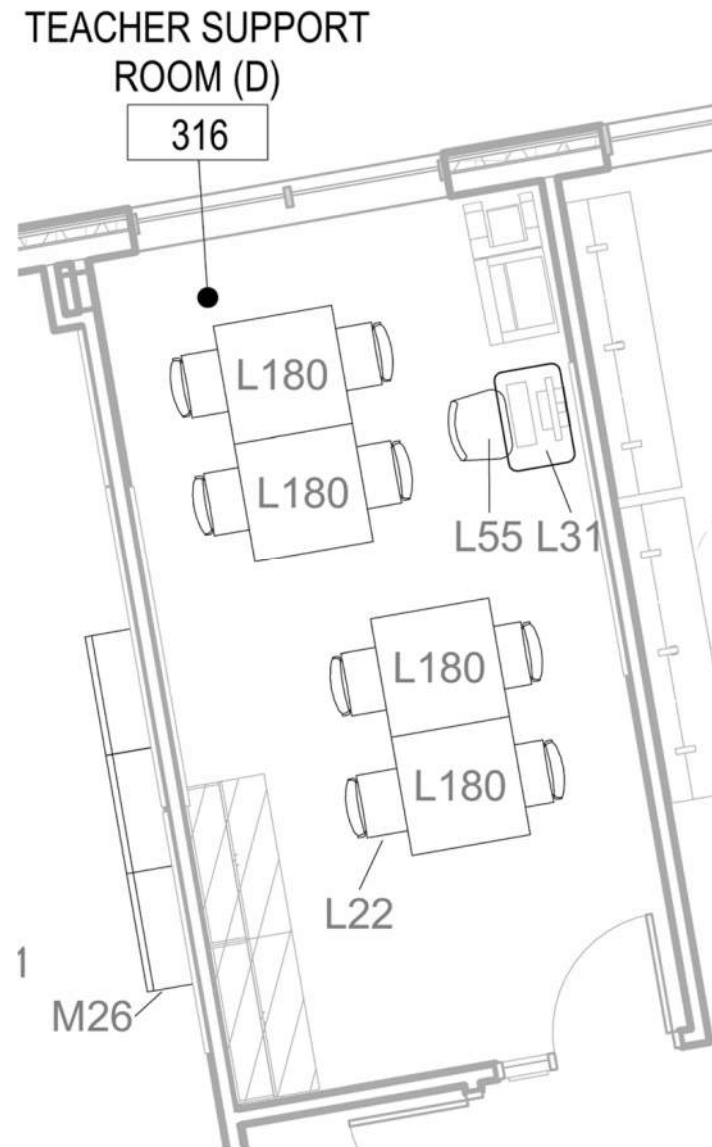


## FURNITURE / CASEWORK / MILLWORK

Furniture	Qty	Tag	Note
Work Table	4	L180	36" D x 36" W x 29" H; with casters
Chair	12	L22	
Computer Stations	1	L31	
Ergonomic Chair	1	L55	

- Confirm how YOU use room.
- Review furniture and equipment.
- Cross out anything not needed.
- Suggest anything missing (must replace something).

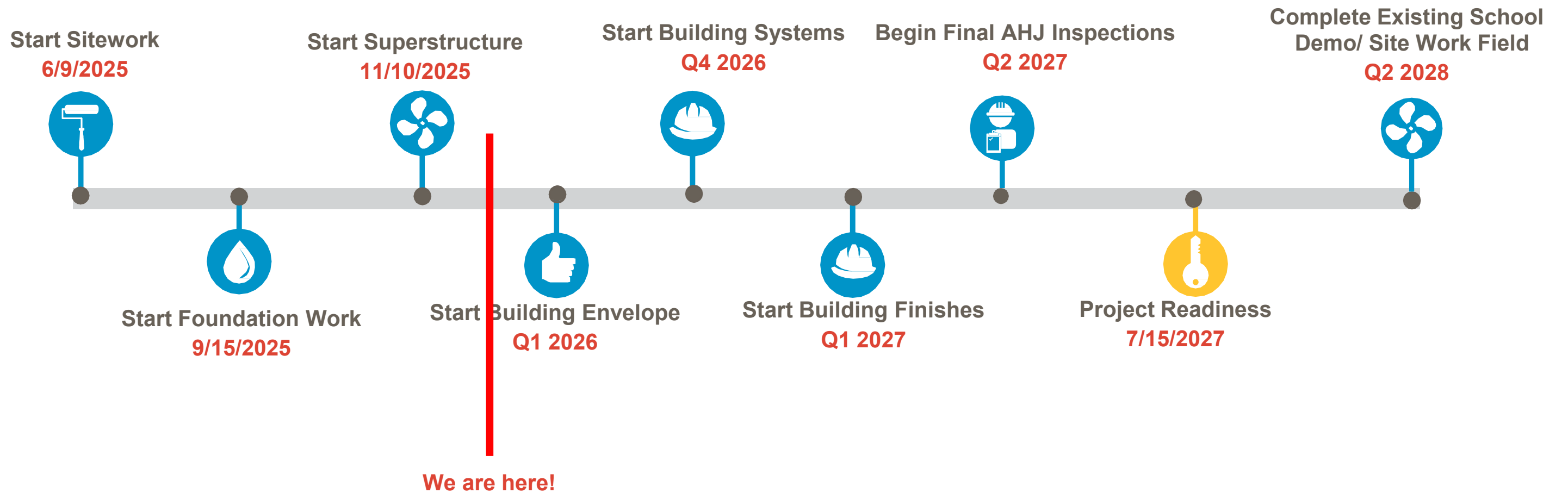
# Teacher Support Room – Dry - Proposed



FURNITURE / CASEWORK / MILLWORK			
Furniture	Qty	Tag	Note
Work Table	4	L180	36" D x 36" W x 29" H; with casters
Chair	8	<del>12</del> L22	
Computer Stations	1	L31	
Ergonomic Chair	1	L55	

- There are 2 total rooms
- This is a typical room.
- We can customize each of the 2 rooms or apply the same logic.

# Schedule Overview



## Previous completed activities

- Earthwork – Sediment Trap, Earth Dikes, Berms
- 
- Building Pad grading
- 
- Site Grading
- 
- Aggregate Geopiers
- 
- MEP Underground Piping to begin soon
- 
- Concrete Foundations
- 
- Slab on Grade

## Progress pictures

- Overview – Looking West



- Overview – Looking East – Geothermal Field



## Progress pictures

- Looking Northwest – Area A



- Looking Southwest – Area D



## Progress pictures

- Looking Northeast – Area B

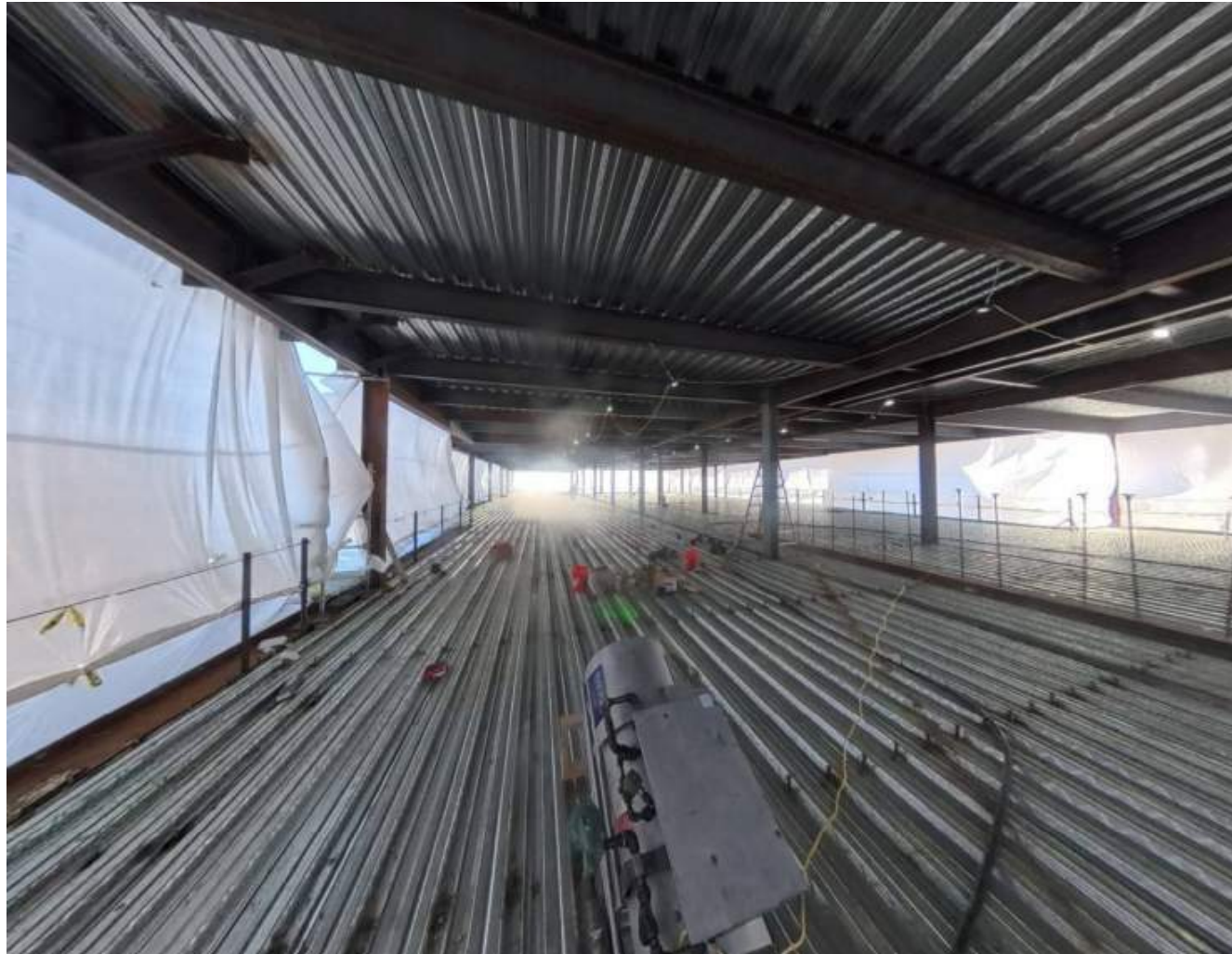


- Looking West – Area C and D



## Progress pictures

- Metal Deck 2<sup>nd</sup> Level – Area A



- Slab on Metal Deck 3<sup>rd</sup> Level – Area A



## Upcoming Activities (next 6 weeks)

- Structural Steel Erection in Area A & D in process.
- 
- CMU shaft walls
- 
- Geothermal Wells in process.
- 
- Exterior Framing in Area A
- 
- Site Utilities – Continue installing onsite storm Structures and Pipes

# Open Discussion

# For more information, please contact:



Jam Kendrick

[pg\\_jam.kendrick@pgcps.org](mailto:pg_jam.kendrick@pgcps.org)

[pepblueprintschoolsp3.com](http://pepblueprintschoolsp3.com)

