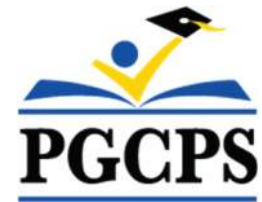




PGCPS . **ENGAGE . DESIGN . BUILD . COMMUNICATE** . PGCPS



TEMPLETON ELEMENTARY SCHOOL

TOWN HALL MEETING #3 | MARCH 17, 2026



Simultaneous Interpretation

SPANISH:

El servicio de interpretación simultánea está disponible en español. Haga clic en el icono del globo terráqueo en la parte inferior de la pantalla y seleccione **Spanish** (español).

ARABIC:

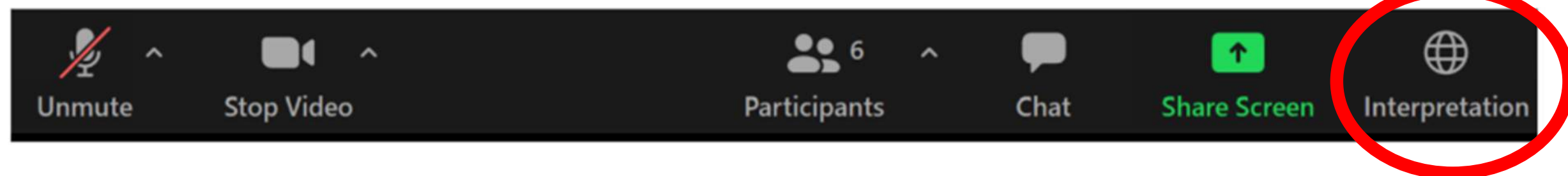
الترجمة الفورية متوفرة باللغة العربية. اضغط على ايقونة الكرة الأرضية أسفل الشاشة وحدد العربية.

DARI:

(ترجمه به دری) . روی نماد کره در پایین صفحه کلیک کنید و را انتخاب کنید . ترجمه همزمان به زبان دری موجود است

PASHTO:

(په پښتو ژباړه) . د سکرین په پای کې د گلوب عکس کلیک وکړئ او پښتو غوره کړئ . په پښتو کې یو شان تفسیر شتون لري



Servicios De Interpretación

Interpreting Services

On a Computer

At the bottom of the screen will be an interpretation globe. Click that globe and then select Spanish.

En una Computador

En la parte baja de la pantalla habrá un globo de interpretación. Haga clic en ese globo y seleccione “Spanish.”

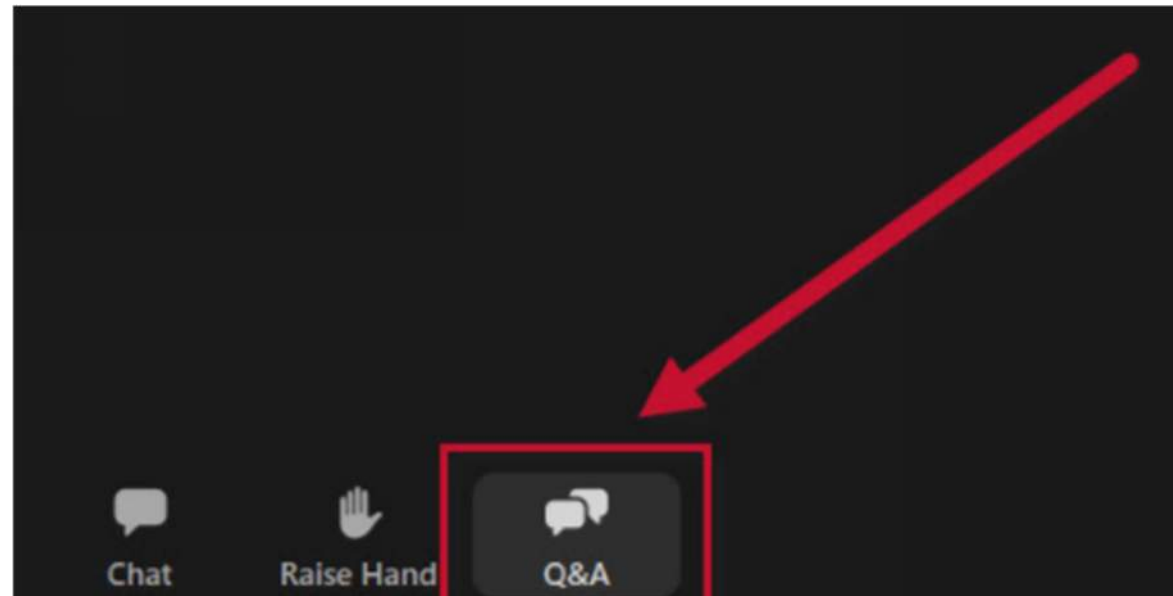
On a Mobile Device

At the bottom of the screen, tap the ellipses icon on the bottom right (...). Tap “Language Interpretation.” Tap “Spanish.”

En un Dispositivo Móvil

En la parte baja de la pantalla, toca el icono de ellipses en la parte baja derecha (...). Toque “Language Interpretation.” Toque “Spanish.”





We value your input.

- Please type your questions/comments in the Q&A area of Zoom.
- Questions and answers from this town hall will be posted on pgcpsblueprintschools.com.

Welcome

PGCPS, Department of Alternative Infrastructure, Planning, and Development

- **Shawn Matlock, *Director***



Welcome

Prince George's County Public Schools, Board of Education Member, District 4

- Aimee Olivo





Our Commitment

PGCPS is committed to moving swiftly to deliver safe, state-of-the-art, and sustainable learning environments for our students, teachers, and communities.



Agenda

- Design Recap
- Construction Updates
- Discussion
- Contacts

Design Recap

- No major design changes since last meeting.
- Construction continues and we are on schedule.
- Furniture coordination with school has been completed.
- Interior design to be presented today.

Site Plan

- Separate car and bus drop-off
- Inviting Entry plaza
- Vehicular parking
- Outdoor classroom and play areas

LEGEND	
①	Entry Plaza
②	Parking Lot
③	Bus Loop
④	Drop-Off
⑤	Play Lawn
⑥	Outdoor Classroom
⑦	Garden Plots
⑧	Pre-K/K Playground
⑨	Primary Playground
⑩	Paved Play
⑪	Monument Sign
⑫	Service Area
⑬	Undeveloped Easement for 57th Avenue
⑭	Temple Knolls Neighborhood Park (MNCPPC)
⑮	Proposed Hamlet Woods Subdivision





Note: Design is subject to change

No change from last meeting.

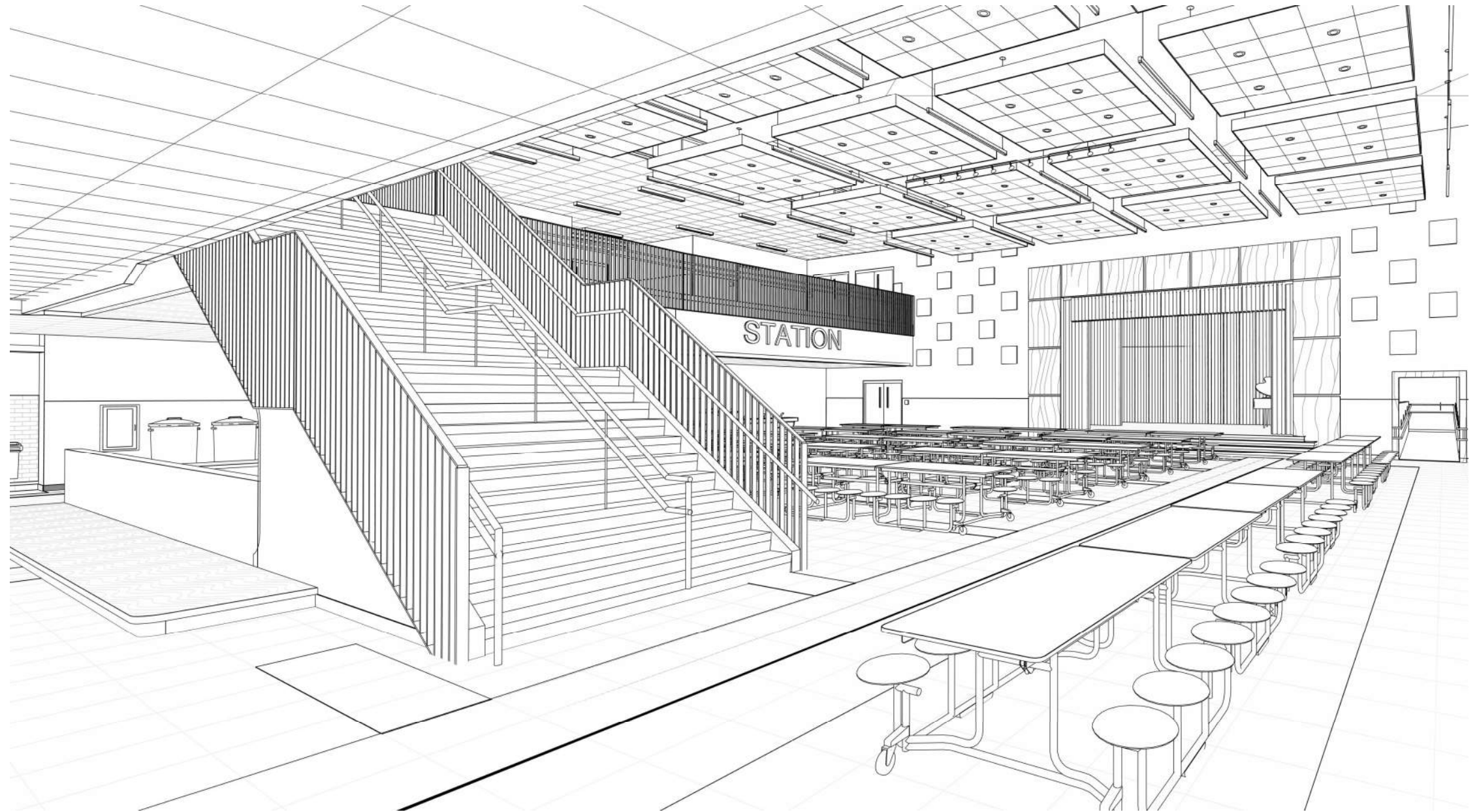


Note: Design is subject to change



No change from last meeting.

Progress Interior Views



Dining – 1st Floor



- Final finishes to be coordinated with school.

Interior Design

- Heart of the School
- Main entrance
- Monumental stair
- Library

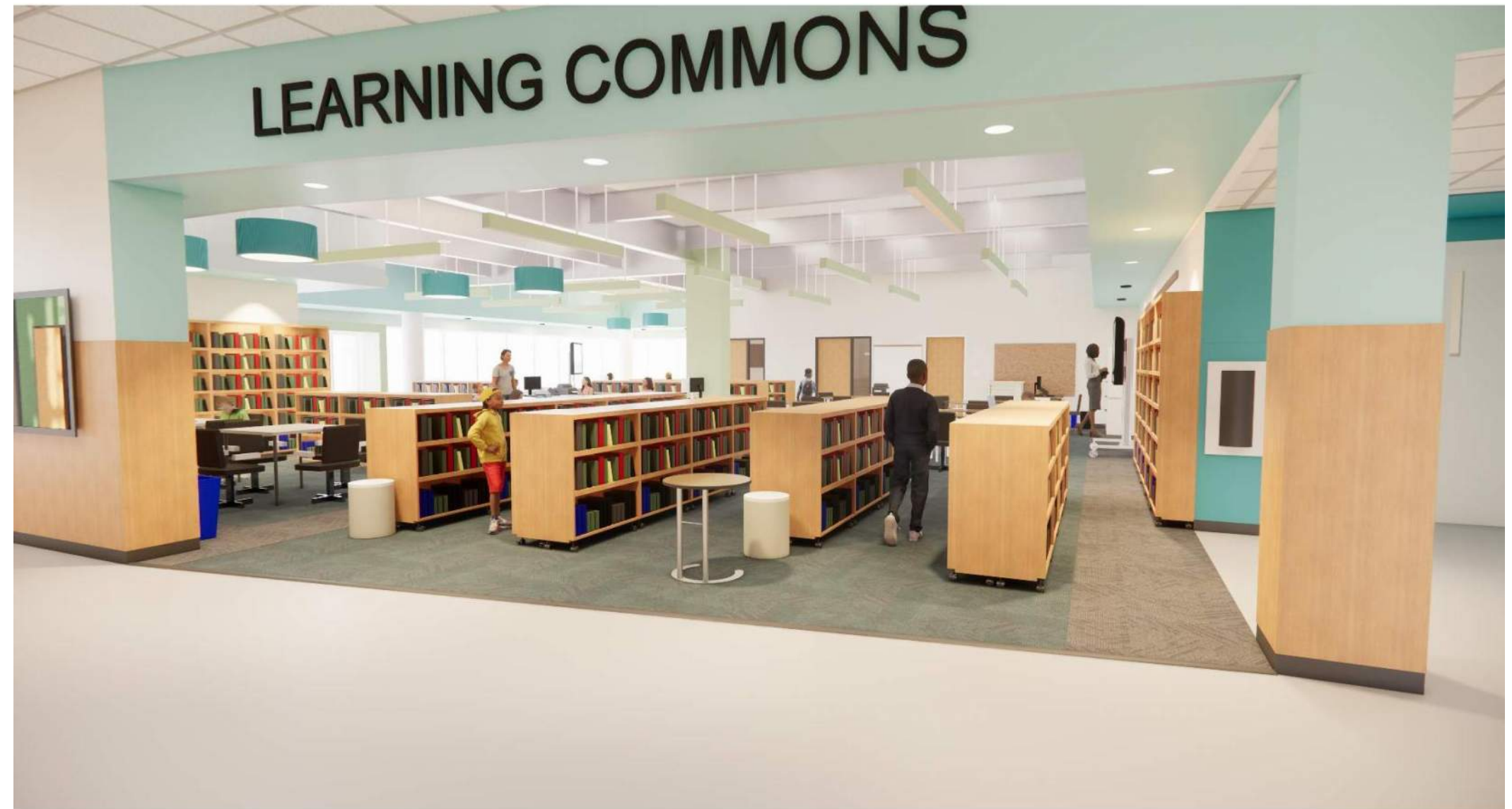
Image shows Brent but Templeton is similar.



Interior Design

- Library entrance
- Templeton library to be enclosed.

Image shows Brent but Templeton is similar.



Interior Design

- Dining/Performance space



Interior Design

- Gymnasium

Image shows Brent but Templeton is similar.



Interior Design

- Collaboration Spaces

Image shows Brent but Templeton is similar.



Interior Design

- Grades PK-K

Image shows Brent but Templeton is similar.



Interior Design

- Grades 1-3

Image shows Brent but Templeton is similar.



Interior Design

- Grades 1-3



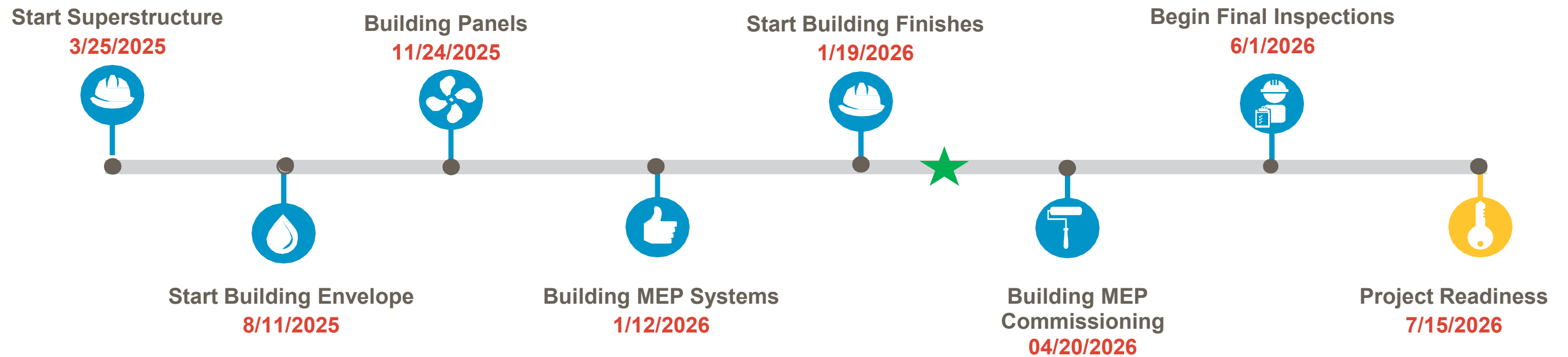
Interior Design

- Grades 4-5

Image shows Brent but Templeton is similar.



Schedule Overview



★ Current Project Completion is about 70 %

Major Activities Completed and In progress:

- Building foundation and superstructure completed
- Geothermal wells and vault install completed
- Site retaining walls in progress
- Building envelope and roofing installation completed
- Exterior façade – About 80% brick installation completed
- Windows and glazing – Exterior storefront and curtainwall installation completed
- MEP in-wall and overhead rough-in installations completed, MEP Systems installation and HP room connections in progress
- Drywall – About 90% interior framing and drywall installation completed
- Paint - Priming and 1st coat of paint on walls in progress
- Ceiling grid, registers and grills, light fixtures and fire alarm devices installation in progress
- Ceramic tile installation in progress
- Kitchen walk-in cooler and hood installation in progress

Upcoming Activities (next 6 weeks)

- Complete retaining wall 3
- Concrete curb, gutter, sidewalk and parking lot asphalt basecoat
- Begin bio retention ponds
- 100% drywall install and finishes
- Interior storefront system installation
- Complete prime and first coat paint
- Complete ceiling grid, registers and grills, light fixtures and fire alarm devices installation
- Flooring and ceramic tile installation
- Millwork installation
- Begin tasks for pre-start up of MEP systems
- Switchgear and generator start up

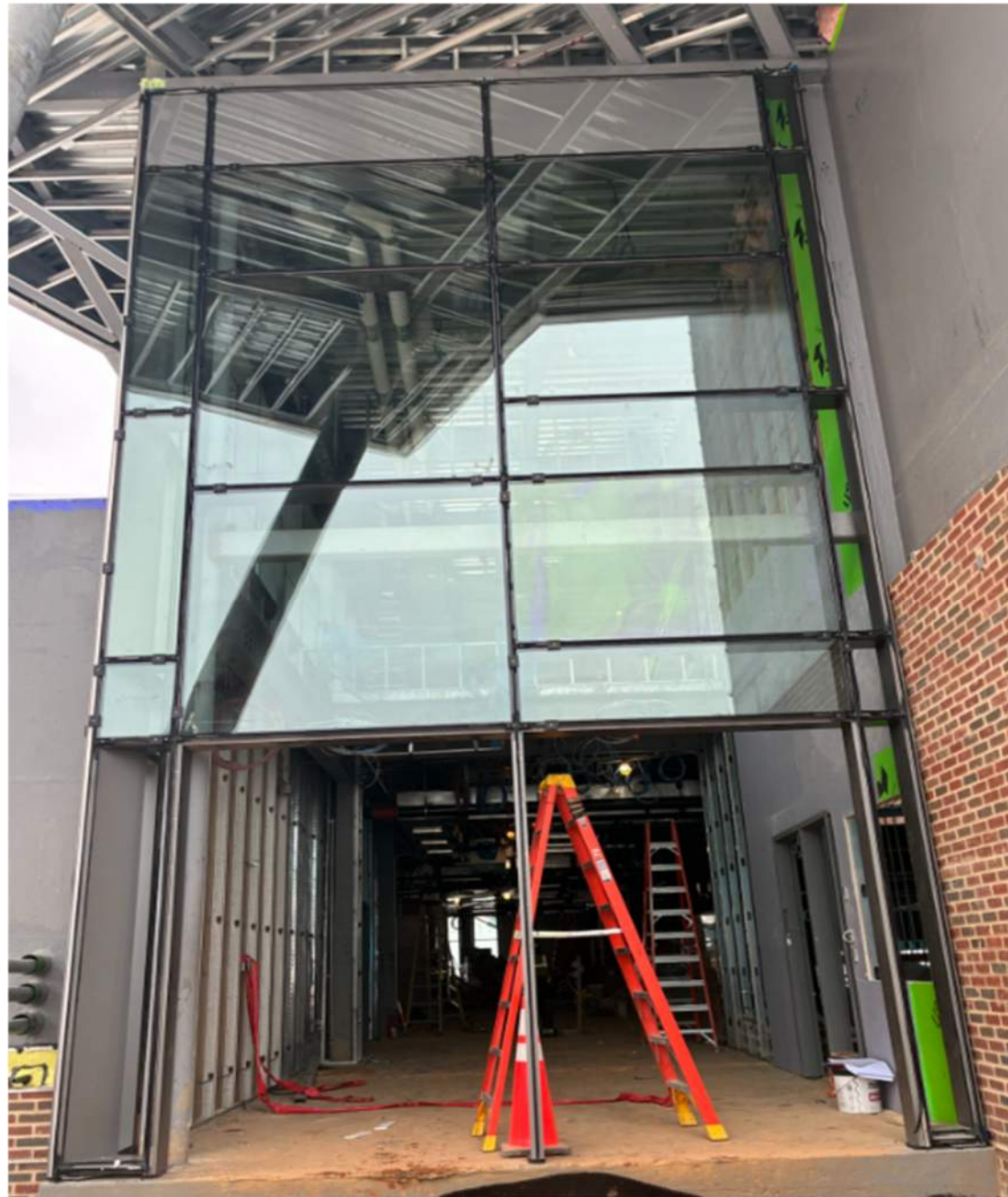
Progress pictures

- Construction Progress of Front Entry Façade (North Elevation)



Progress pictures

- Construction Progress of Front Entry Façade (North Elevation)



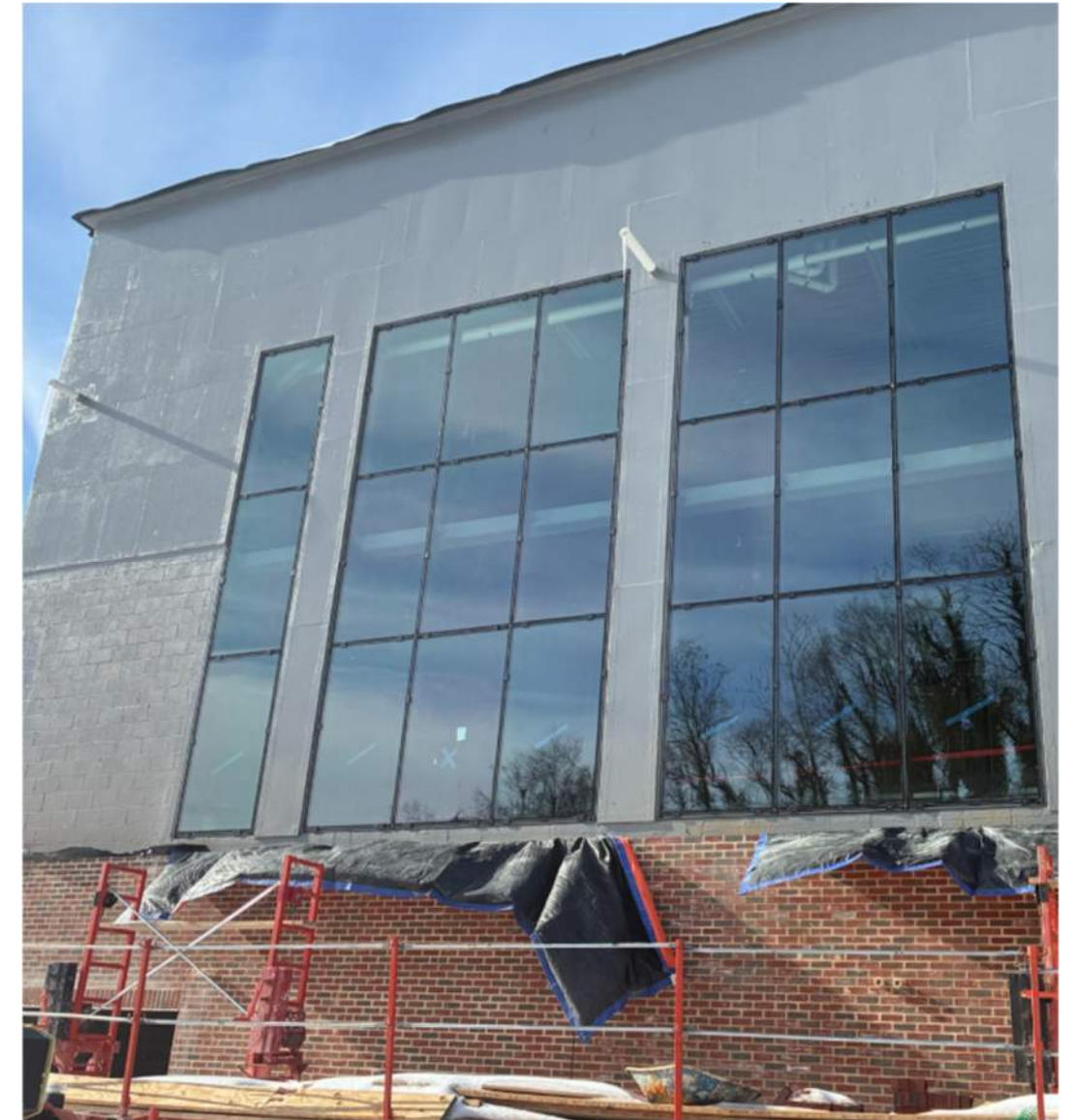
Progress pictures

- Aerial View of Building Rear In Progress



Progress pictures

Building Façade



Progress pictures

- Building Exterior



Progress pictures

- Heat Pump Rooms



Progress pictures

- Interior Finishes in Progress



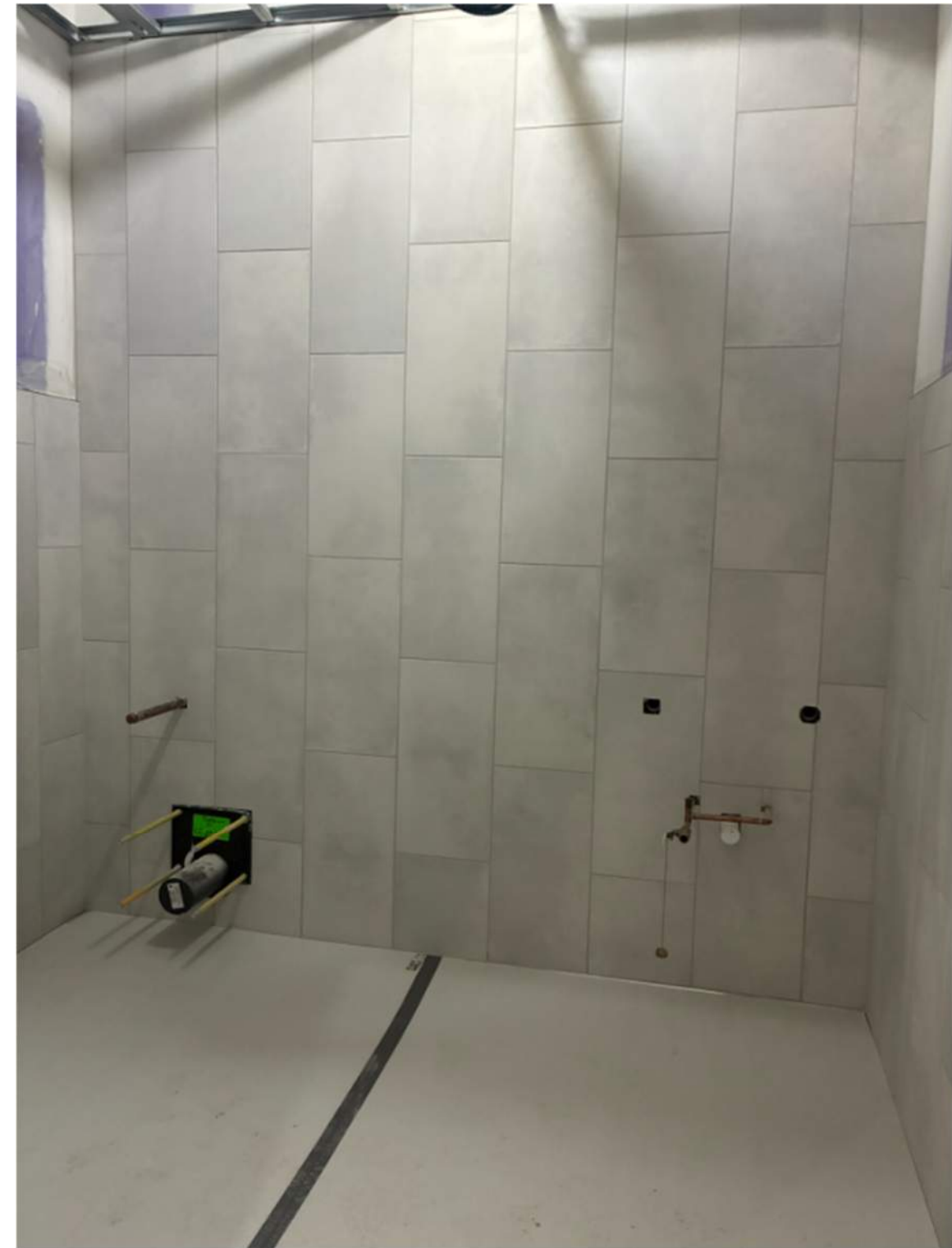
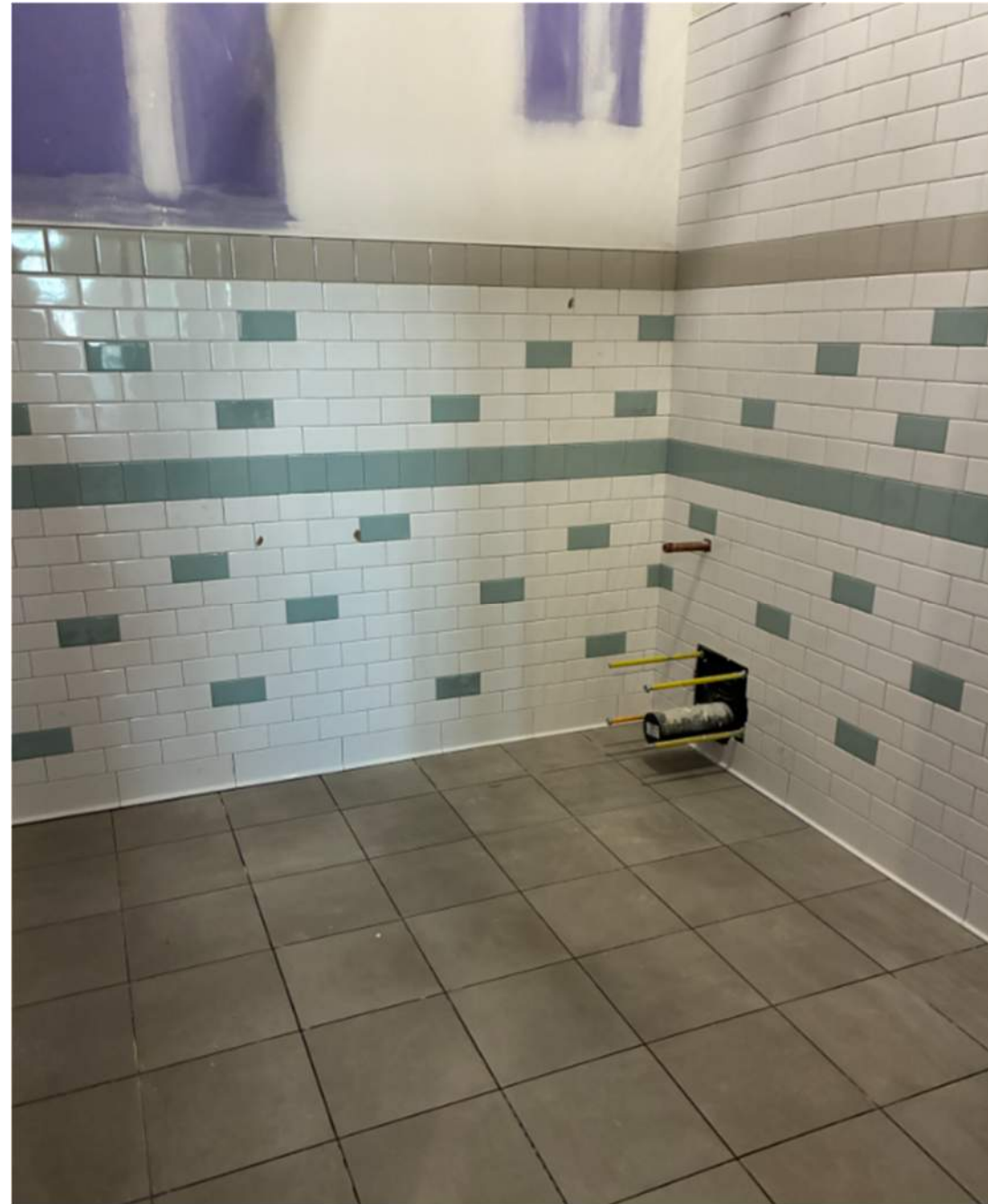
Progress pictures

- Interior Finishes in Progress



Progress pictures

- Bathroom Ceramic Tile Installation in progress



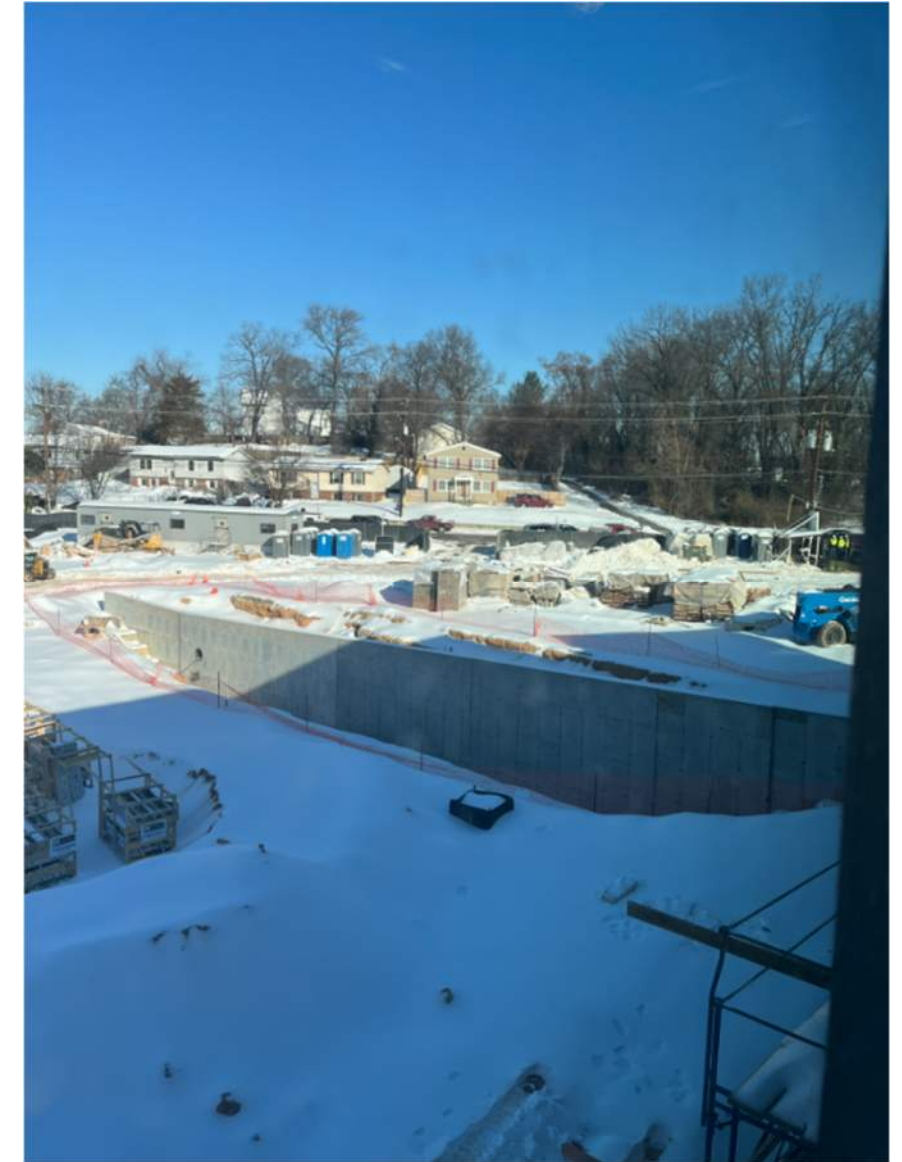
Progress pictures

- Site Retaining Wall Installation



Progress pictures

- Site Retaining Wall Installation



Progress pictures

- Geothermal Horizontal Piping Completed



Progress pictures

- Geothermal Horizontal Piping (December)



Discussion

For more general information, please contact:



Jam Kendrick

pg_jam.kendrick@pgcps.org

pepblueprintschoolsp3.com

