



PGCPS . **ENGAGE . DESIGN . BUILD . COMMUNICATE** . PGCPS



DUCKWORTH ELEMENTARY SCHOOL

PROJECT PLANNING COMMITTEE MEETING #1 | JUNE 11, 2026





Agenda

- Team Introduction
- Design Updates
- Construction Schedule
- Questions
- Contacts

Team Introduction



Gillian Schloss
Plenary
Vice President

Adam Dunn
PLENARY
Assistant Project Manager

Jeremy Ebie
PHOENIX
Equity Members' Project Manager

Rob Summers
PHOENIX
Operating Partner

Peter Bullen
ELLISDON CAPITAL
Senior Director



Bassem Boustany
MCN
Principal

Yonas Menji
MCN
Lead Construction Manager

Rick Munford
MCN
Preconstruction Director

Rekik Zelleke
MCN
Project Manager



Sean O'Donnell
PERKINS EASTMAN
Design Process Executive In Charge & Lead Architect

Omar Calderon
PERKINS EASTMAN
Design Principal

Jack Chin
PERKINS EASTMAN
Project Manager



Pete Cambell
ELLISDON FS
Director, P3 Pursuits

Brandon Kelley
USF
Vice President

Johnathan Bolden
RSC
President



Sharon Bradley
BSD
Principal

Ivan Zapata
BSD
Director of Civil Engineering



Jam Kendrick
TB&A
Project Manager

Site Plan

- Bus drop-off (min 7 buses)
- Vehicular parking (85 min)
- Outdoor classroom and play areas



LEGEND

- | | |
|---------------------|----------------------------|
| ① Entry Plaza | ⑧ Pre-K/K Playground |
| ② Parking Lot | ⑨ Primary Playground |
| ③ Bus Loop | ⑩ Paved Play |
| ④ Drop-Off | ⑪ Monument Sign |
| ⑤ Play Lawn | ⑫ Service Area |
| ⑥ Outdoor Classroom | ⑬ Stormwater Learning Area |
| ⑦ Garden Plots | ⑭ Pedestrian Crossing |

Note: Design is subject to change

Site Plan

- Parent drop-off
- On site queuing



Precedent Images



Floor Plan

DEPARTMENT

- ACADEMIC - CORE
- ACADEMIC - EXTENDED
- ADMINISTRATION
- ADMINISTRATION - NURSE'S SUITE
- BUILDING SERVICES
- BUILDING SUPPORT
- CIRCULATION
- DINING
- MEDIA CENTER
- PERF ARTS
- PHYS ED
- SPEC ED
- VISUAL ARTS



Floor Plan



DEPARTMENT

- ACADEMIC - CORE
- ACADEMIC - EXTENDED
- ADMINISTRATION
- ADMINISTRATION - NURSE'S SUITE
- BUILDING SERVICES
- BUILDING SUPPORT
- CIRCULATION
- DINING
- MEDIA CENTER
- PERF ARTS
- PHYS ED
- SPEC ED
- VISUAL ARTS



Elevations and Renderings



Note: Design is subject to change

Draft Interior Views



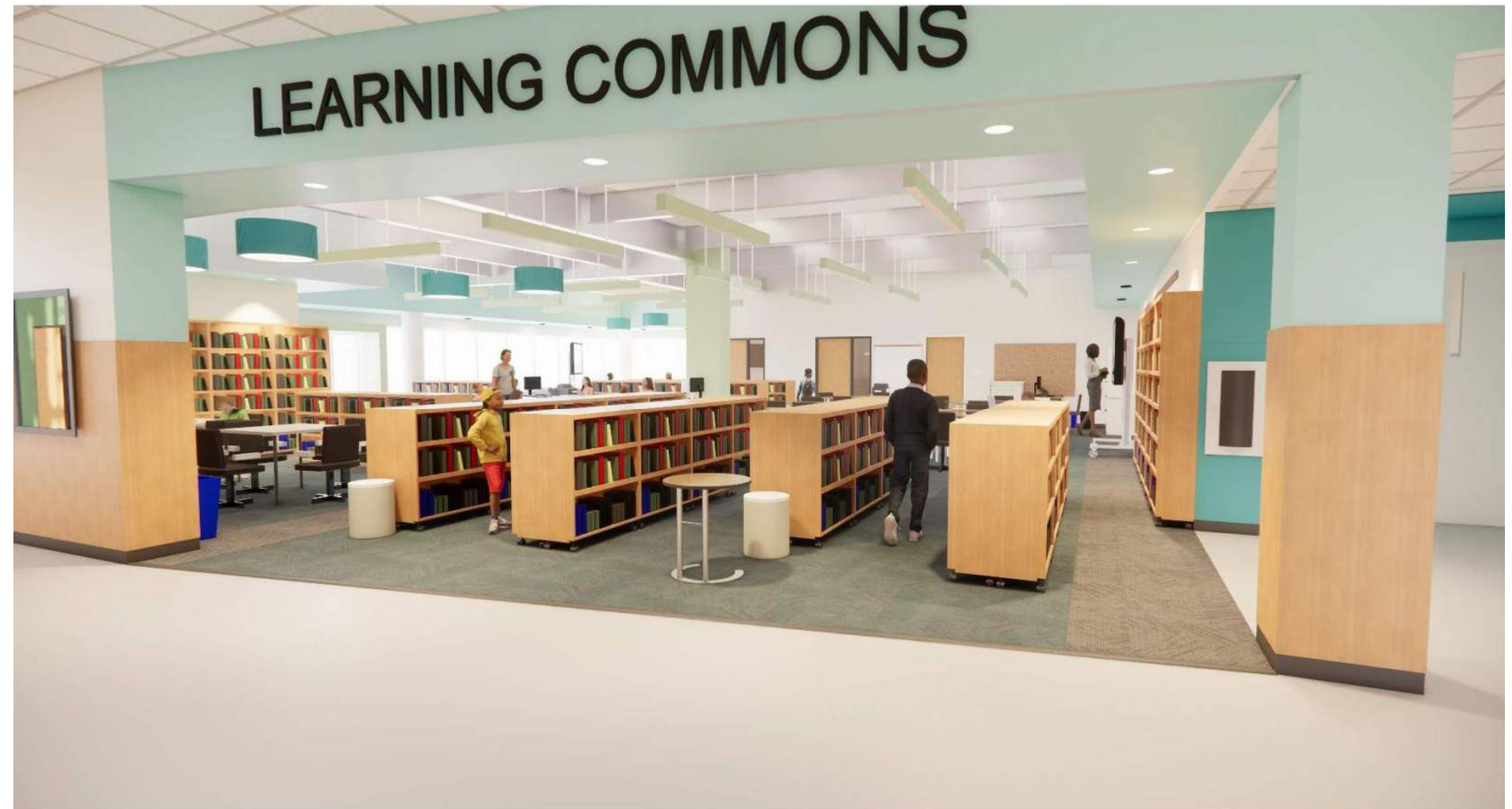
Typical View of Lobby

Note: Design is subject to change

Draft Interior Views

- Library entrance

These are prototypical views for most of the elementary schools.



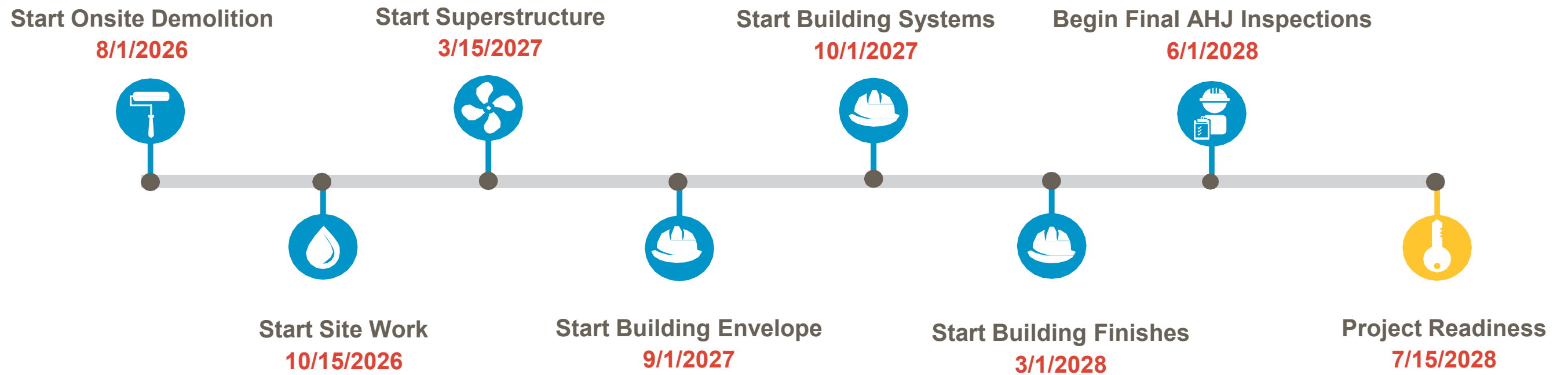
Draft Interior Views

- Collaboration Spaces



Typical View of Corridor

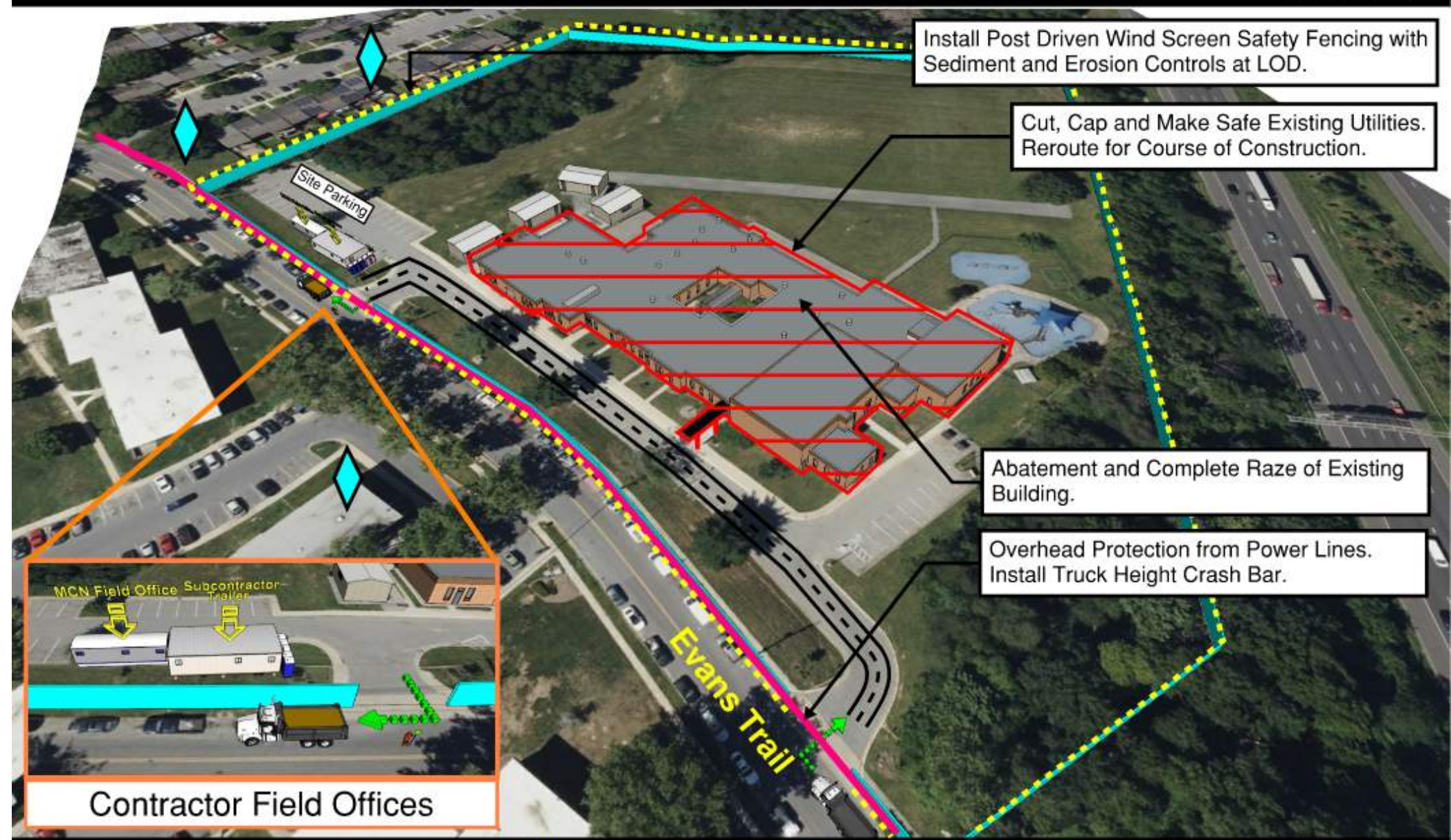
Schedule Overview



Logistics Plan

James E. Duckworth ES: New Building Logistic & Phasing Plan

Sequence 2 - Demolition & Rough Grading



Sequence 1 - Site Controls & LOD (Not Shown)
Sequence 2 - Demolition & Rough Grading
 Sequence 3 - Superstructure & Facade
 Sequence 4 - Final Site & Completion

- : Dedicated Flaggers
- : Vibration & Settlement Monitors

Prior to the demolition and rough grading process, MCN will take necessary measures to secure the site by installing safety fencing and implementing sediment and erosion control systems. The existing utilities will undergo a meticulous identification process and be safely cut, capped, and secured. These utilities will be rerouted and repurposed as temporary facilities to facilitate the construction activities.

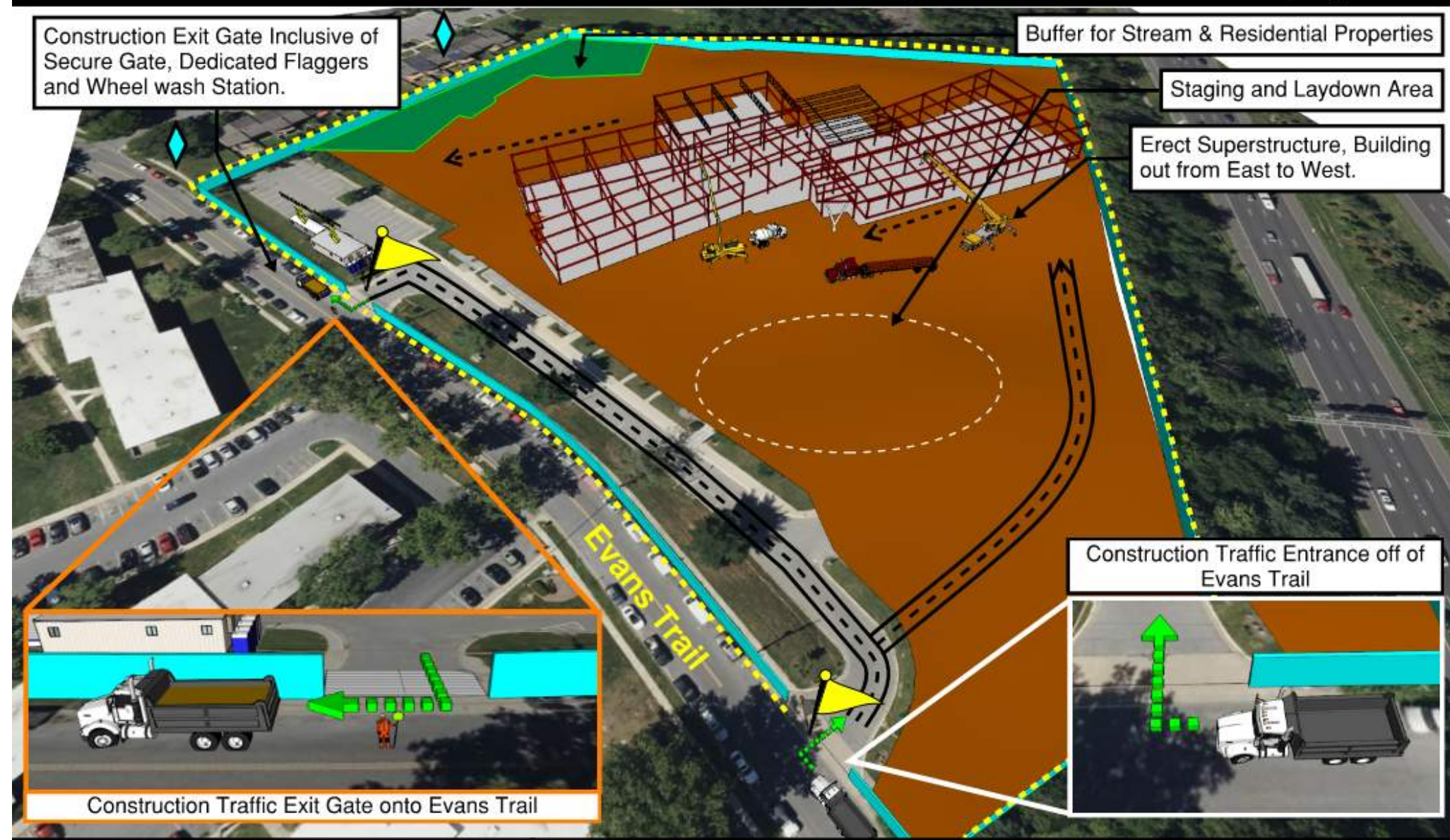


NTS

Logistics Plan

James E. Duckworth ES: New Building Logistic & Phasing Plan

Sequence 3 - Superstructure & Facade



- Sequence 1 - Site Controls & LOD (Not Shown)
- Sequence 2 - Demolition & Rough Grading
- Sequence 3 - Superstructure & Facade**
- Sequence 4 - Final Site & Completion

- : Dedicated Flaggers
- : Vibration & Settlement Monitors

The new school will be constructed in an unobstructed area within the existing site. The construction activities will be carefully situated at an ample distance from neighboring properties, ensuring that excessive vibration and noise disturbances are prevented during the process.



NTS

Questions?

For more information, please contact:



Jam Kendrick

pg_jam.kendrick@pgcps.org

pepblueprintschoolsp3.com

