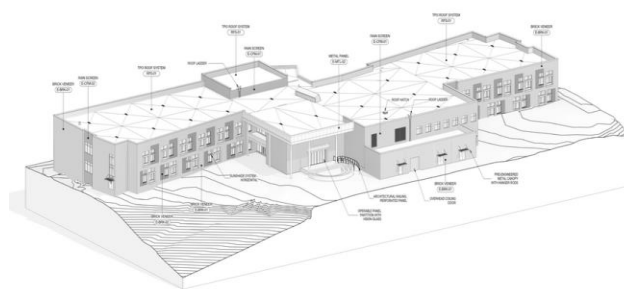




## PROJECT HIGHLIGHTS

Prince George's County Public Schools (PGCPS) is embarking on an ambitious project to design, construct, finance, and maintain 8 new schools. This initiative, known as the Phase 2 Project, is part of the Blueprint Schools Program aimed at providing modern, sustainable educational facilities. The project is being developed by Progressive Education Partners (PEP) and involves a public-private partnership (P3) model.



The new school will span approximately 101,586 square feet, providing a modern and spacious environment for students and staff. The construction is expected to be completed by July 2026, ensuring that the new school is ready for occupancy for the 2026-2027 academic year. Throughout the duration of the project, we will provide numerous opportunities for community engagement and participation. Regular updates will be shared to ensure that the community remains informed about our progress and key milestones achieved along the way. Please visit our website at [www.pepblueprintschooolsP3.com](http://www.pepblueprintschooolsP3.com) for more information.

## CONSTRUCTION ACTIVITY

Margaret Brent Elementary School is undergoing a significant transformation. The existing Margaret Brent Elementary School has been demolished to make way for a new, state-of-the-art facility. The construction for the new school has begun early December. There will be an increase in site activity, and we have taken measures to control sound pollution. Noise levels to be monitored as well.

### Construction Observation:

- Interior Drywall, Paint & Ceramic Tiling
- Mechanical Heat Pumps
- Lighting & Plumbing Fixtures
- Ceiling Grid & Tiles
- Brick & Metal Façade
- Curtainwalls, Storefronts & Canopies
- Concrete Curbs & Asphalt Roadway
- Temporary road closures – NOTE: Flagger will be onsite to safely guide motorists through the construction zone.

### ***Interested in working on the construction site?***

*Check the Project Bulletin Board at the site for applications and contact information or visit our website at [www.pepblueprintschooolsP3.com](http://www.pepblueprintschooolsP3.com)*

## CONSTRUCTION SCHEDULE

Work Hours: 7 A.M. to 7 P.M. Monday through Saturday

**Construction Start:** November 2024

**Anticipated Construction Completion:** Summer 2026

## POINT OF CONTACT

Yonas Menji – Vice President – [Yonas@mcnbuild.com](mailto:Yonas@mcnbuild.com)  
Craig Gagnon – General Superintendent - [craig.gagnon@mcnbuild.com](mailto:craig.gagnon@mcnbuild.com) - 202.288.8549  
Rekik Zelleke – Project Manager - [rekik.zelleke@mcnbuild.com](mailto:rekik.zelleke@mcnbuild.com) – 202.655.7205