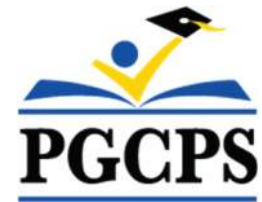




PGCPS . **ENGAGE . DESIGN . BUILD . COMMUNICATE** . PGCPS



ROBERT FROST K-8 SCHOOL

PROJECT PLANNING COMMITTEE MEETING #8 | MAY 13, 2026





Agenda

- Design Recap
- Construction Updates
- Open Discussion
- Contact

Design Recap

- No design changes since last meeting.
- Construction continues.
- Next steps:
 - Have integrated PPC meetings with all 3 schools moving forward.
 - Group B school furniture and specialty equipment coordination in the Fall 2026.
 - PPC in person tour of school late Winter 2027.
 - Sustainability curriculum coordination Spring 2027.

Group A Tours



Rendering vs Reality



View of Main Entrance



Interior Design

- Main Lobby



Interior Design

- Community Entrance



Interior Design

- Community Entrance



Interior Design

- Library/Media Center



Interior Design

- Library/Media Center



Interior Design

- Collaboration Spaces

Image shows Brent but Frost is similar.



Interior Design

- Collaboration Spaces

Image shows Brent but Frost is similar.



Interior Design

- Grades PK-K

Image shows Brent but Frost is similar.



Interior Design

- Grades 1-3

Image shows Brent but Frost is similar.



Interior Design

- Grades 1-3



Image shows Brent but Frost is similar.

Interior Design

- Grades 4-5

Image shows Brent but Frost is similar.

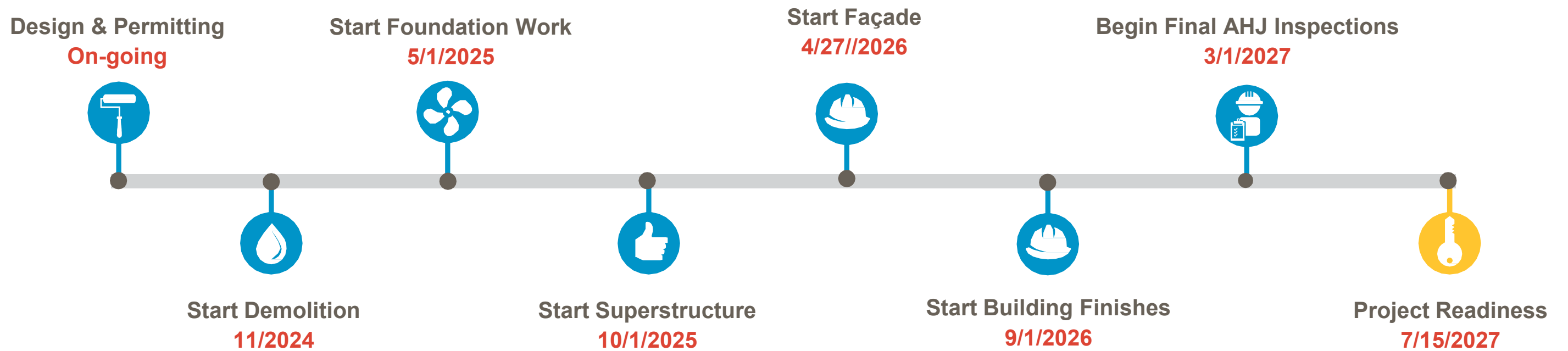


Interior Design

- Gymnasium



Schedule Overview



Activities completed

- Establish preliminary site controls
- Raze and demo of existing building
- Phase 1 – Earthwork, E&S controls & tree conservation plan
- Phase 2 A & B – storm drain structures Installation
- Onsite public storm and sanitary relocation
- Phase 2 A & B earthwork and building pad grading
- Geothermal wells & vault installation
- Building foundations and slab on grade
- Underground MEP installation
- Area A, B, C & D structural steel & decking
- Stair 1 – 4 & elevator CMU shafts
- Foundation masonry and waterproofing
- 85th Ave waterline work
- WSSC SU sewer & water
- Exterior framing A & B

Progress Pictures



Area A South Exterior Framing



Area C Structural Steel

Progress Pictures



Area B North Elevation



Area A North Elevation

Progress Pictures



Area A South Elevation



Area A South Elevation

Progress Pictures



Area D Exterior Framing



Area C Exterior Framing

Progress Pictures

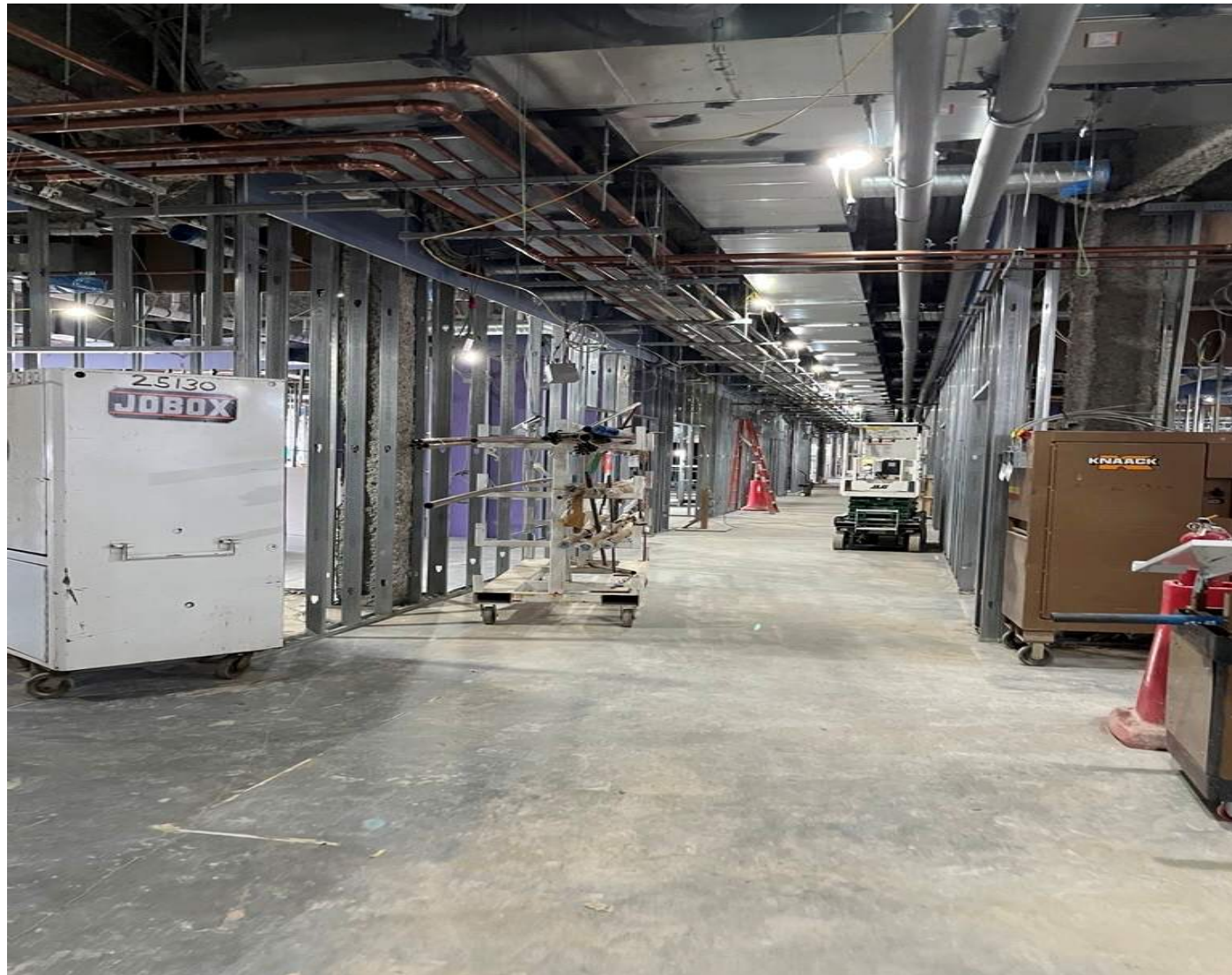


Roofing Area C

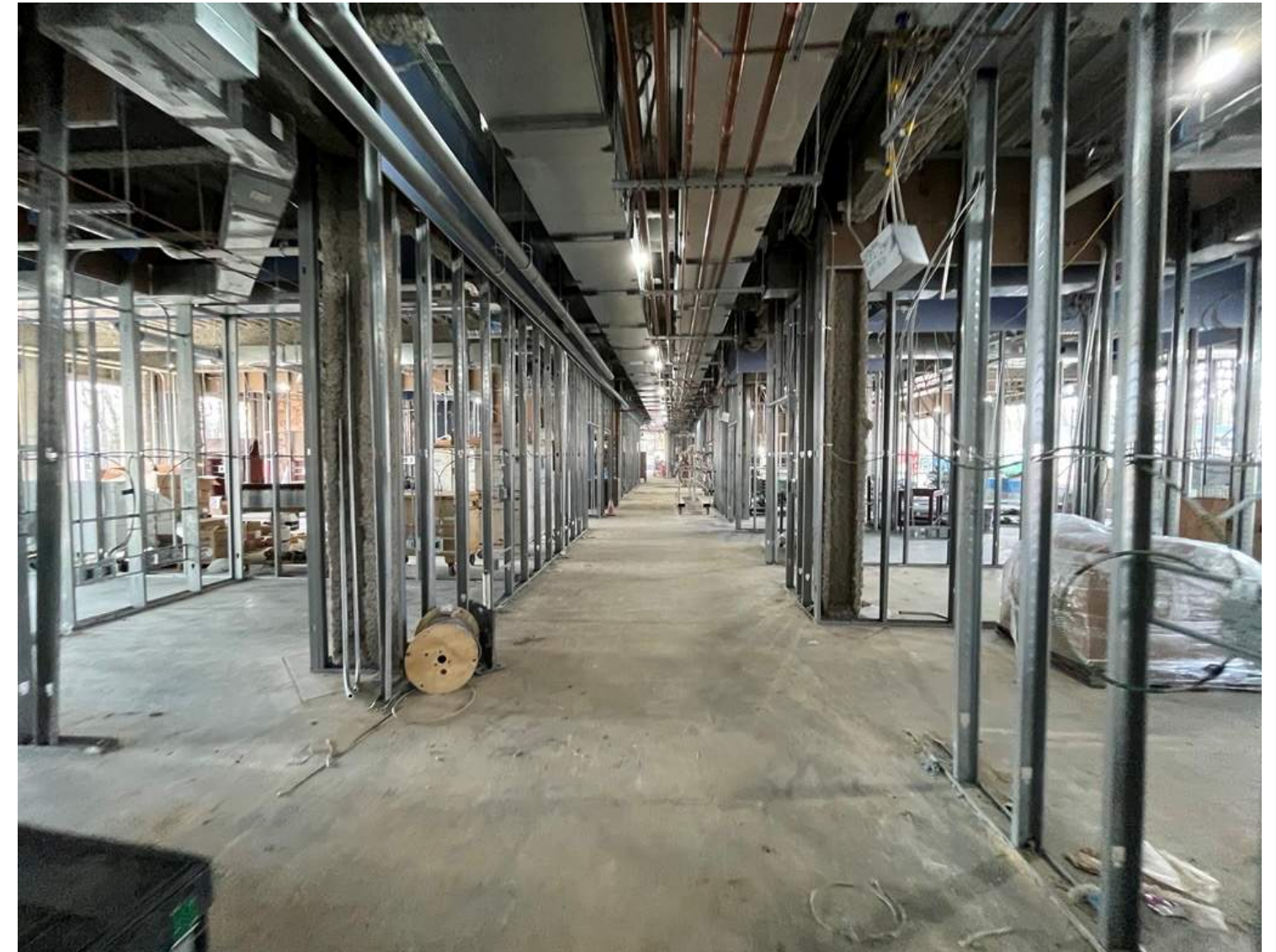


Roofing Area D

Progress Pictures



Interior Framing MEP Rough Ins (Area A)



Interior Framing & MEP Rough Ins (Area A)

Progress Pictures



Classroom with Operable Partition



Interior Framing and MEP Rough Ins

Progress Pictures

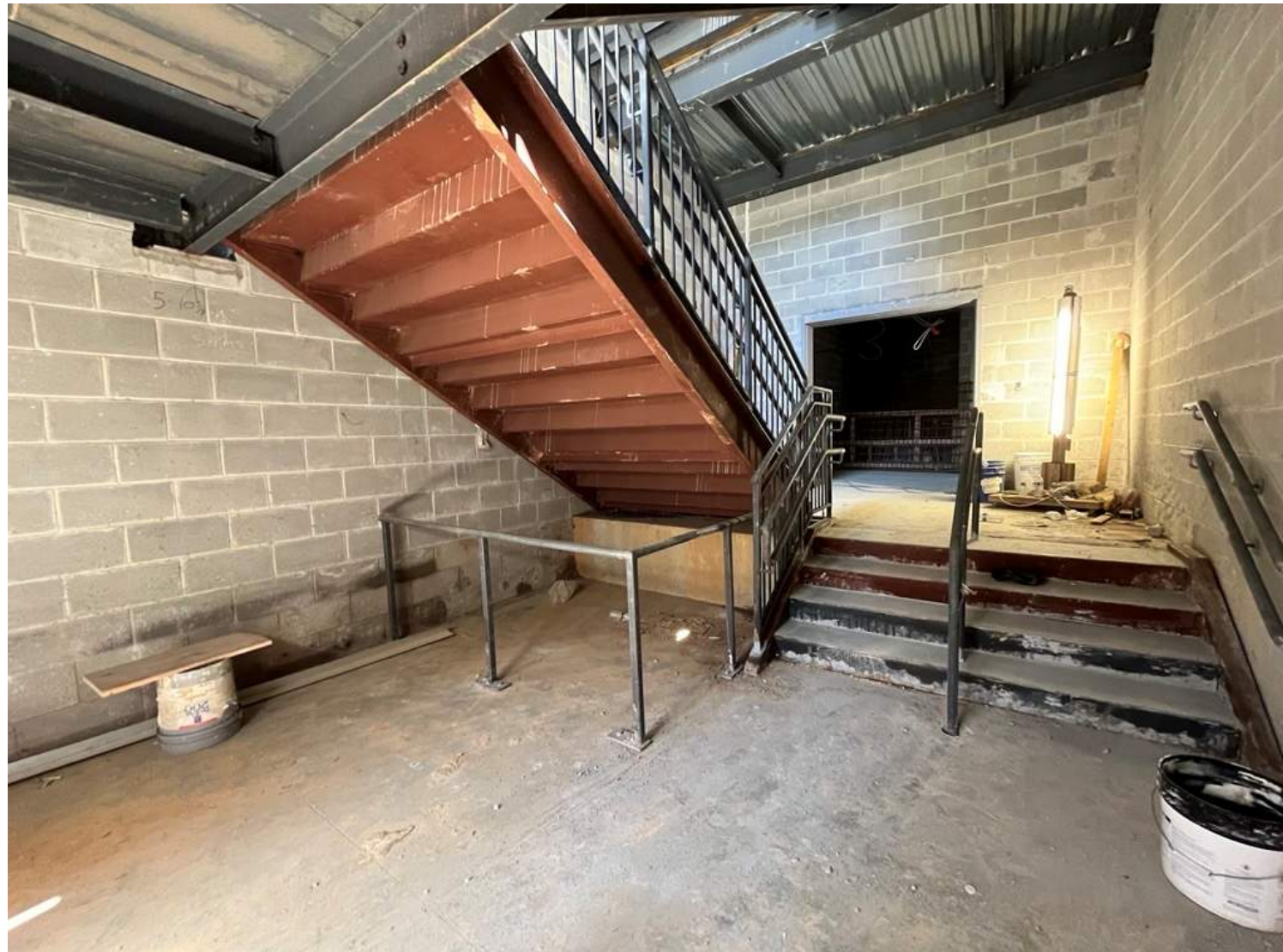


Drywall and Insulation in Area A



Drywall and Insulation in Area A

Progress Pictures



Stair 2 - Area A

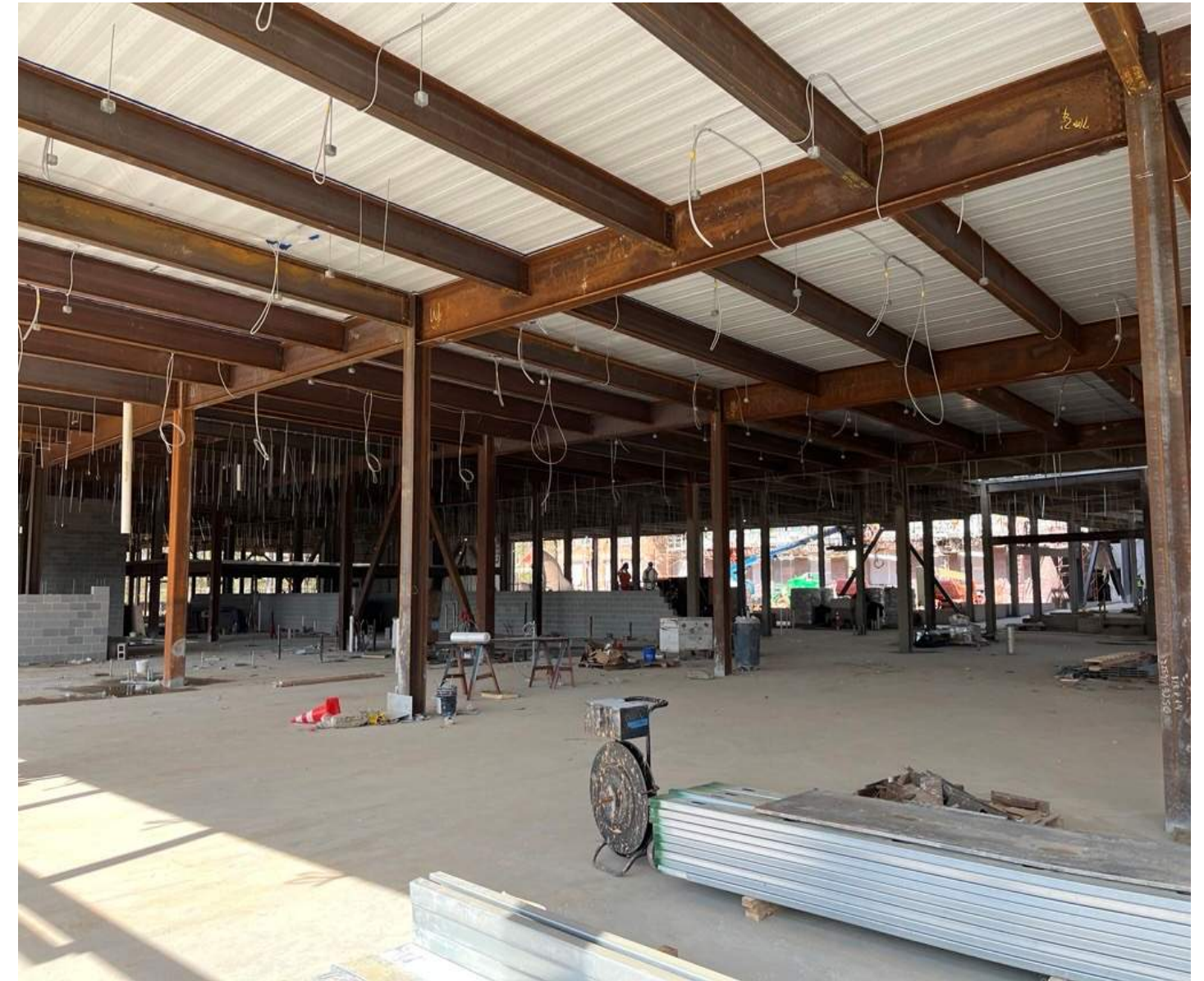


Library

Progress Pictures



Gymnasium



Dining Commons

Progress Pictures



Area A South Elevation - Metal Panel and Windows



Main Entrance

Upcoming Activities (next 6 weeks)

- Phase 3A & B – storm drain structures Installation In progress
- Spray applied fireproofing
- Interior cold form metal framing
- Interior MEP rough-ins
- Exterior framing areas C & D
- Roofing
- Air barrier
- Facade Brick
- Storefront windows in areas A & B
- Metal wall panels
- Area A drywall and insulation
- Fire sprinkler system

Open Discussion

For more information, please contact:



Jam Kendrick

pg_jam.kendrick@pgcps.org

pepblueprintschoolsp3.com



Site Plan

- Bus drop-off
- Vehicular parking
- Outdoor classroom and play areas



Note: Design is subject to change



View of Community Entrance - **Previous**



View of Community Entrance - **Current**

- Early childhood classrooms at grade
- Main entrance
- Heart of the School

DEPARTMENT

- ACADEMIC - CORE
- ACADEMIC - EXTENDED
- ADMINISTRATION
- CIRCULATION
- MEDIA CENTER
- PERF ARTS
- PHYS ED
- SPEC ED
- SUPPORT
- VISUAL ARTS



Note: Design is subject to change



- Elementary and Middle School zones
- Athletics



DEPARTMENT

ACADEMIC - CORE
ACADEMIC - EXTENDED
ADMINISTRATION
CIRCULATION
MEDIA CENTER
PERF ARTS
PHYS ED
SPEC ED
SUPPORT
VISUAL ARTS

Note: Design is subject to change

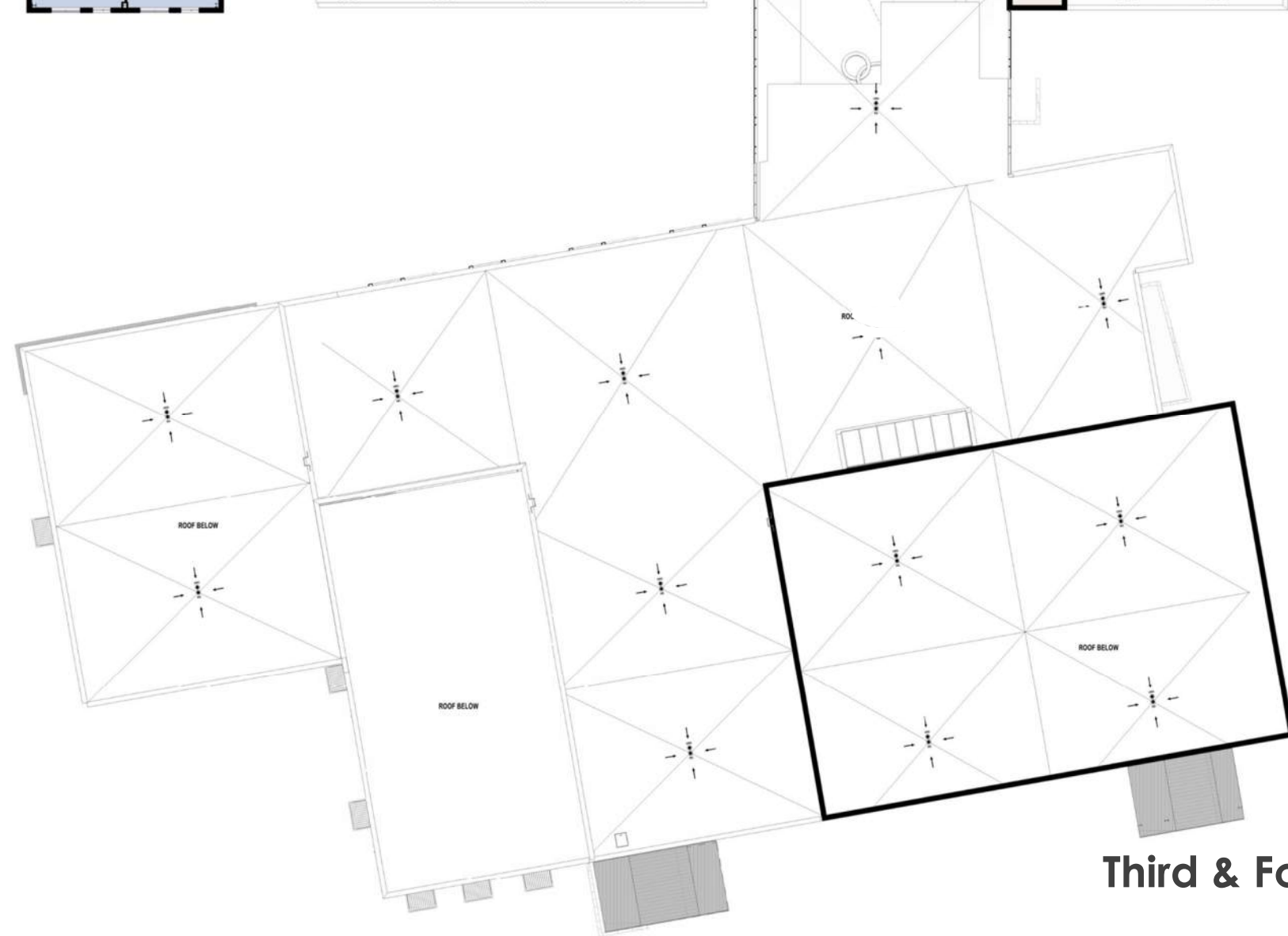


- Upper grade classrooms
- Elementary and Middle School zones



DEPARTMENT

ACADEMIC - CORE
ACADEMIC - EXTENDED
ADMINISTRATION
CIRCULATION
MEDIA CENTER
PERF ARTS
PHYS ED
SPEC ED
SUPPORT
VISUAL ARTS



Third & Fourth Level Plan

Note: Design is subject to change