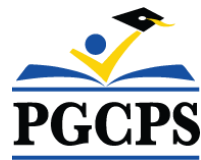




PGCPS . **ENGAGE . DESIGN . BUILD . COMMUNICATE** . PGCPS



# TEMPLETON ELEMENTARY SCHOOL

PROJECT PLANNING COMMITTEE MEETING #2 | SEPTEMBER 24, 2024





## Agenda

- Team Introduction
- Transportation Management Plan
- Design Updates
- Open Discussion
- Next Meetings
- Contact

# Team Introductions



**Jeff Barr**  
PLENARY  
Registered  
Representative

**Hafeez Habib**  
PLENARY  
Equity Members'  
Lead Project Manager

**Brett Sullivan**  
PLENARY  
Associate

**Adam Dunn**  
PLENARY  
Assistant Project  
Manager

**Jeremy Ebie**  
PHOENIX  
Equity Members'  
Project Manager

**Rob Summers**  
PHOENIX  
Operating Partner

**Peter Bullen**  
ELLISDON CAPITAL  
Senior Director



**Bill Beschoner**  
MCN  
Construction Process  
Executive in Charge

**Bassem Boustany**  
MCN  
Principal

**Yonas Menji**  
MCN  
Lead Construction  
Manager

**Rick Munford**  
MCN  
Preconstruction Director



**Sean O'Donnell**  
PERKINS EASTMAN  
Design Process  
Executive In Charge &  
Lead Architect

**Omar Calderon**  
PERKINS EASTMAN  
Design Principal

**Jack Chin**  
PERKINS EASTMAN  
Project Manager



**Pete Cambell**  
ELLISDON FS  
Director, P3 Pursuits

**Brandon Kelley**  
USF  
Vice President

**Johnathan Bolden**  
RSC  
President



**Sharon Bradley**  
BSD  
Principal

**Ivan Zapata**  
BSD  
Director of Civil  
Engineering

**Matthew Cartledge**  
BSD  
Project Manager/  
Landscape Architect



**Jam Kendrick**  
TB&A  
Project Manager



# TMP Recommendations

- Designate a Transportation Coordinator

A high-level school administrator would typically serve in the role of Transportation Coordinator. The Transportation Coordinator acts as a liaison between the school, the community and DPW+T/DPIE to address any operational concerns that arise. The implementation or elimination of TMP strategies would occur under their supervision as would designation of staff to assist in daily tasks associated with the TMP.

- Utilize a Crossing Guard/Police Officer at the Intersection of Carters Ln & 59<sup>th</sup> Ave.

The TIS showed that vehicular delay can be high during peak arrival and dismissal periods at the off-site intersection. Uncontrolled pedestrian flow can add to operational inefficiencies as vehicular traffic must yield. The utilization of a crossing guard or police officer would assist in allowing vehicular traffic to enter and exit the area. In addition, safety benefits would be realized as pedestrians crossing the roadways would be aided.

- Utilize a Crossing Guard/Police Officer at the Intersection of Carters Ln & 59<sup>th</sup> Ave.

The TIS showed that vehicular delay can be high during peak arrival and dismissal periods at the off-site intersection. Uncontrolled pedestrian flow can add to operational inefficiencies as vehicular traffic must yield. The utilization of a crossing guard or police officer would assist in allowing vehicular traffic to enter and exit the area. In addition, safety benefits would be realized as pedestrians crossing the roadways would be aided.

- Assign Staff to Pick Up/Drop-off Locations

Assistance in helping younger children out of personal vehicles in morning can facilitate more efficiency in the drop-off queue. In addition, staff can provide direction to drivers so more than one drop-off can occur simultaneously.

During pick-up in the afternoon, staff could assist in matching students to vehicles which could significantly reduce waiting times.





- Provide Additional Queue Space On-Site

Additional vehicles could queue within the pick-up line if double-stacking occurs or diverting of traffic through the parking area. This mitigation would involve faculty/staff placing cones within the parking lot to divert traffic flow. This measure would only be necessary if queueing extends beyond the site boundary.

- Provide Clear Communication

In order for safe, efficient operations on-site, it is necessary for stakeholders to understand the strategies that are being implemented. Communication should occur by way of emails, hand-outs to students or other means providing detailed instructions on arrival and dismissal procedures for vehicles and pedestrians, and prohibited actions such as drop-offs off-site.

- Establish Enforcement Parameters

Inevitably, there will be parents that attempt to avoid following the designated procedures and enforcement may need to occur. It likely would be as simple as the Transportation Coordinator reminding drivers of the preferred locations for pick-up and drop-off or alerting them to preferred strategies.

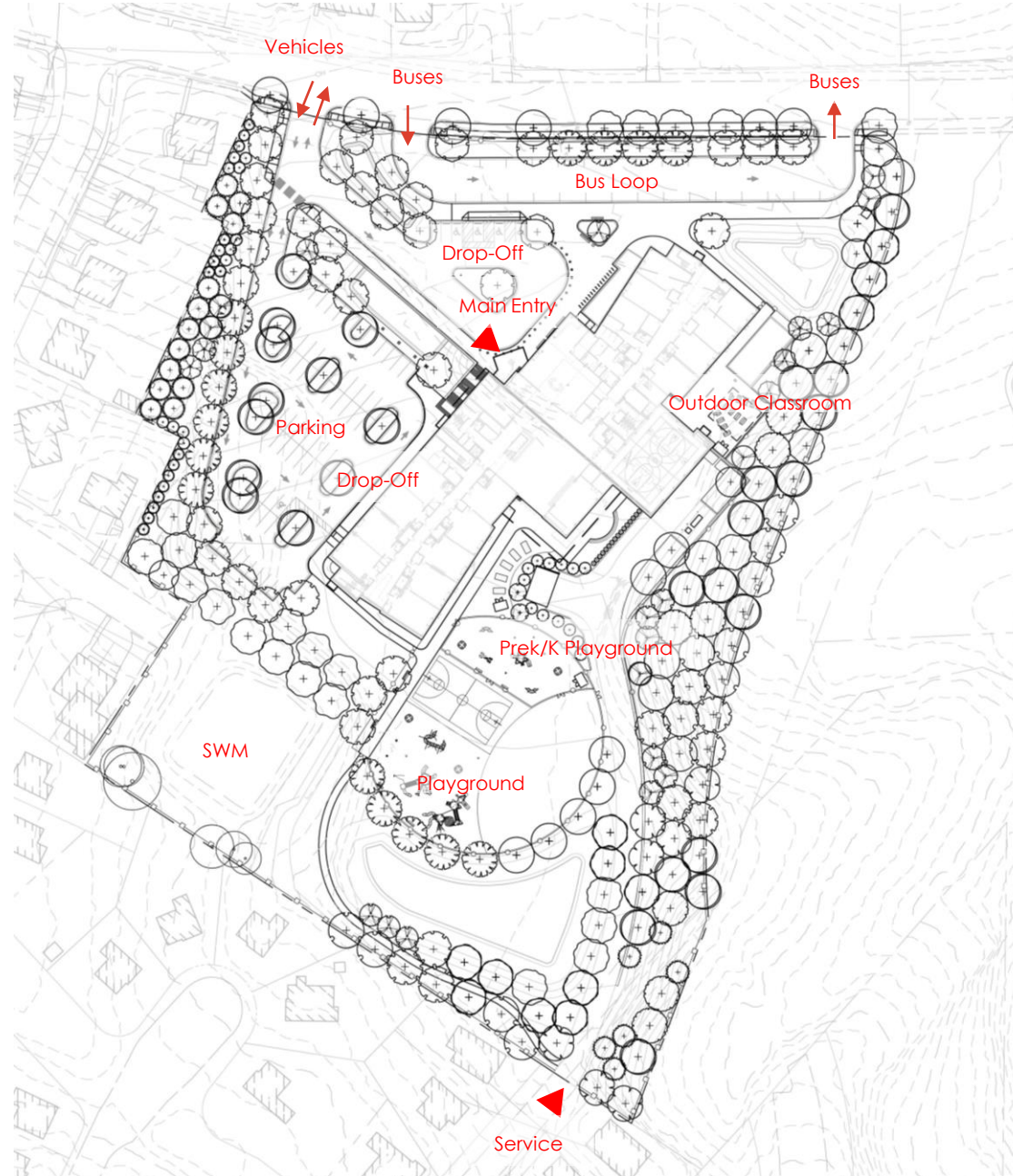
**Figure 6 – Vehicle Storage Space**





# Updated Site Plan

- Separate car and bus drop-off
- Inviting Entry plaza
- Vehicular parking
- Outdoor classroom and play areas





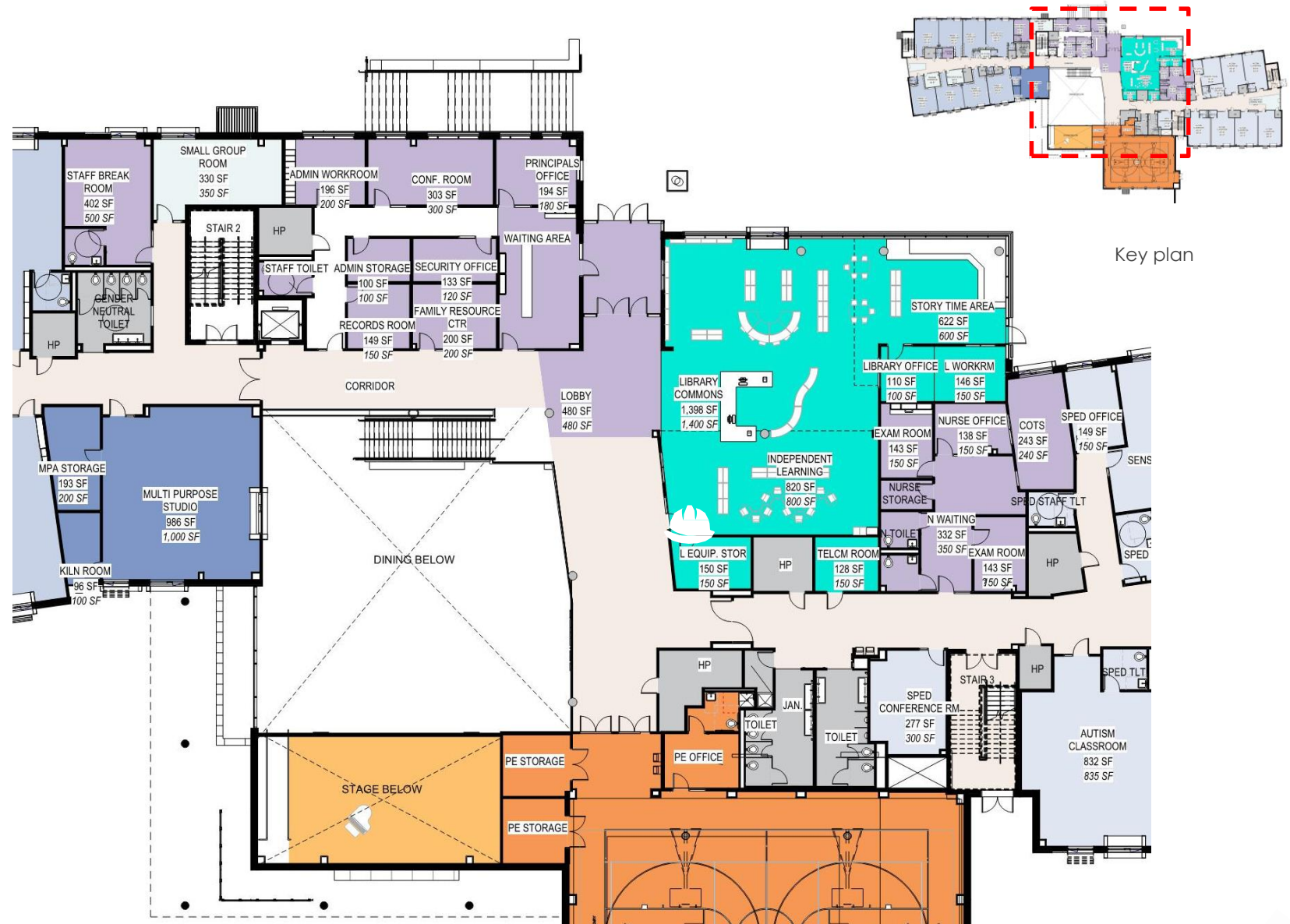


## Heart of the School:

- Library
- Gym
- Dining & Stage (below)

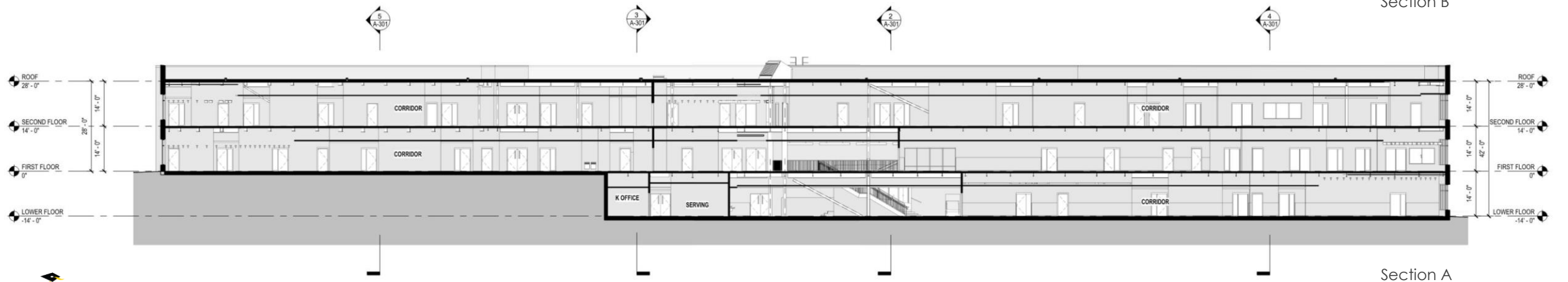
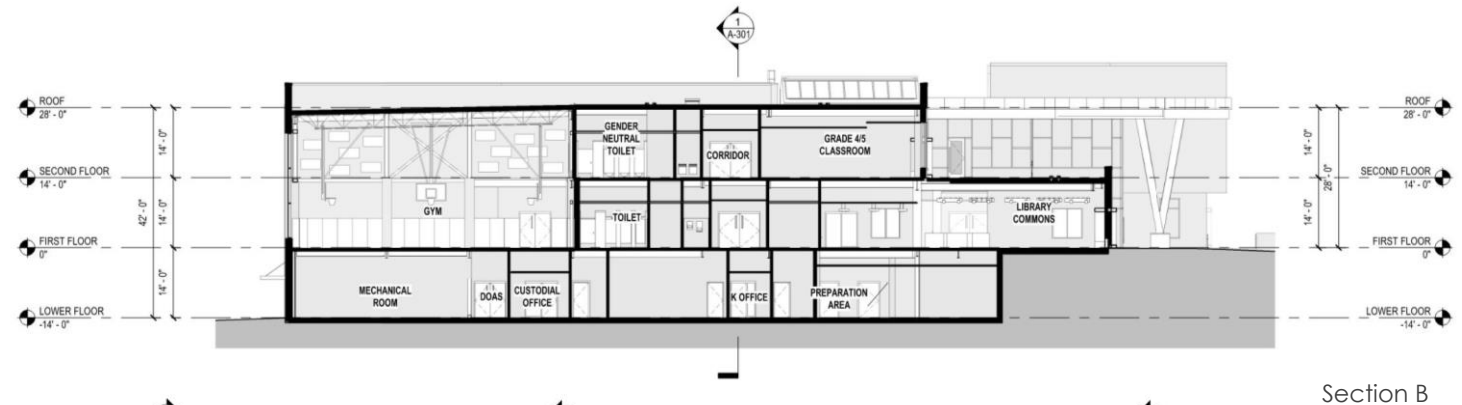
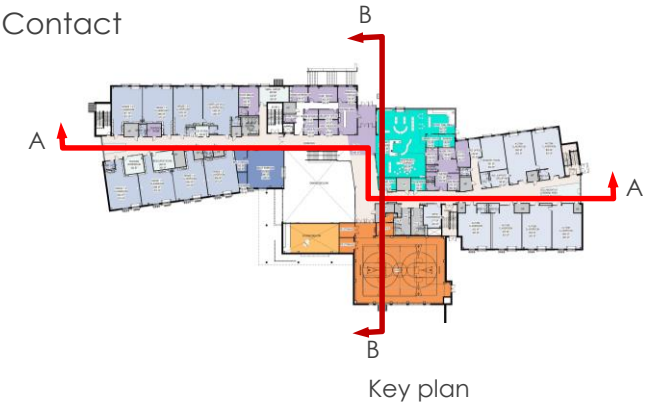
### DEPARTMENT

ACADEMIC - CORE
ACADEMIC - EXTENDED
ADMINISTRATION
CIRCULATION
MEDIA CENTER
PERF ARTS
PHYS ED
SPEC ED
SUPPORT
VISUAL ARTS



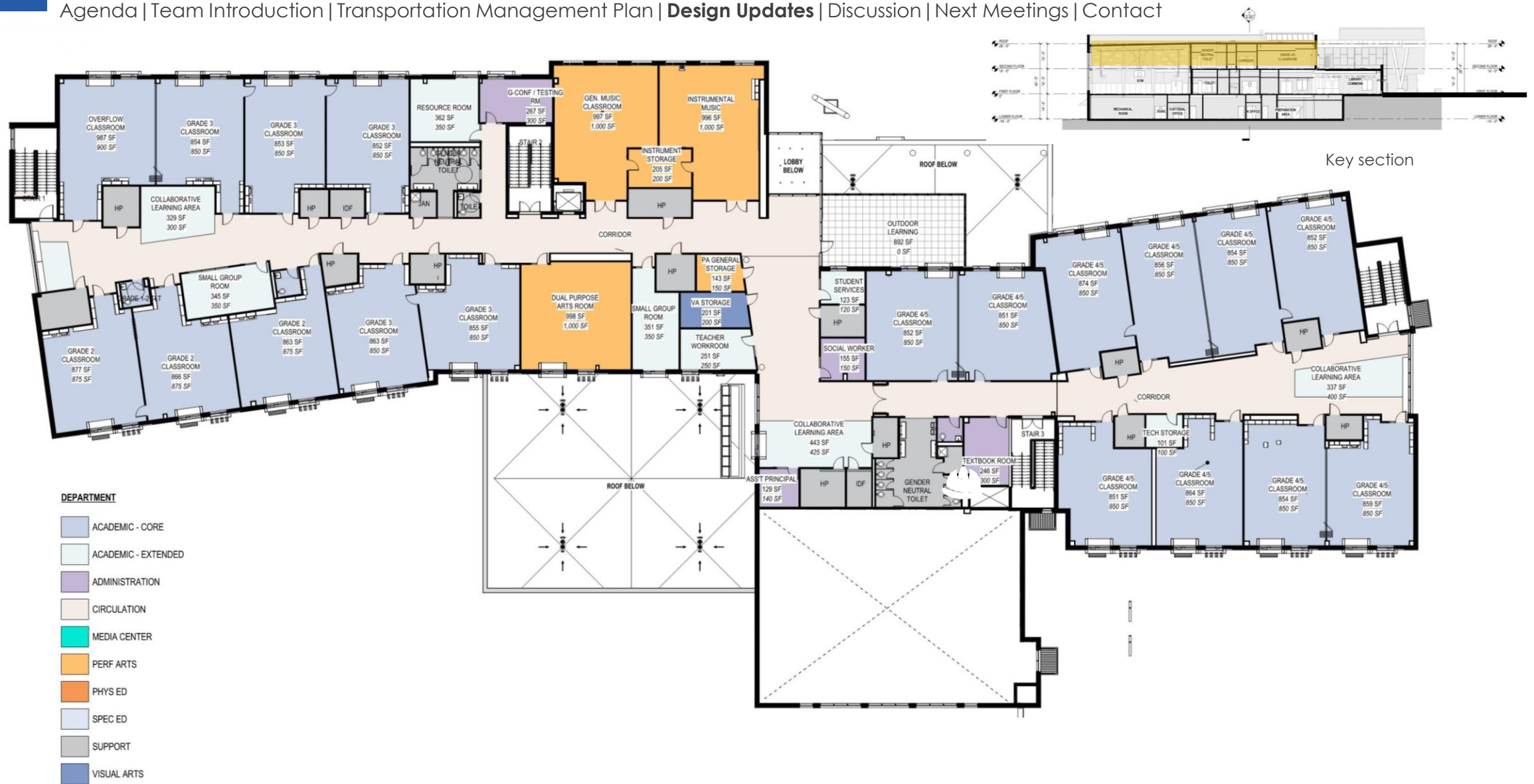
# Building Section

- Stepped to work with the site's notable slope
- Early childhood has ground level access to outdoor activity space









Note: Design is subject to change



- Music & Art conveniently located in the Heart

**DEPARTMENT**

ACADEMIC - CORE
ACADEMIC - EXTENDED
ADMINISTRATION
CIRCULATION
MEDIA CENTER
PERF ARTS
PHYS ED
SPEC ED
SUPPORT
VISUAL ARTS

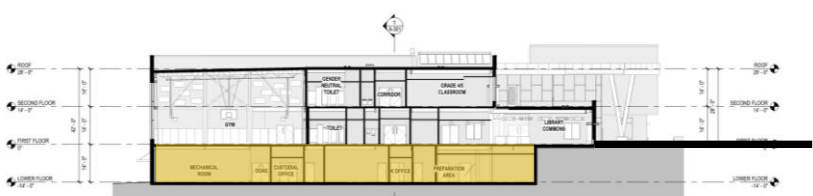


Key plan



Note: Design is subject to change





Key section



Note: Design is subject to change



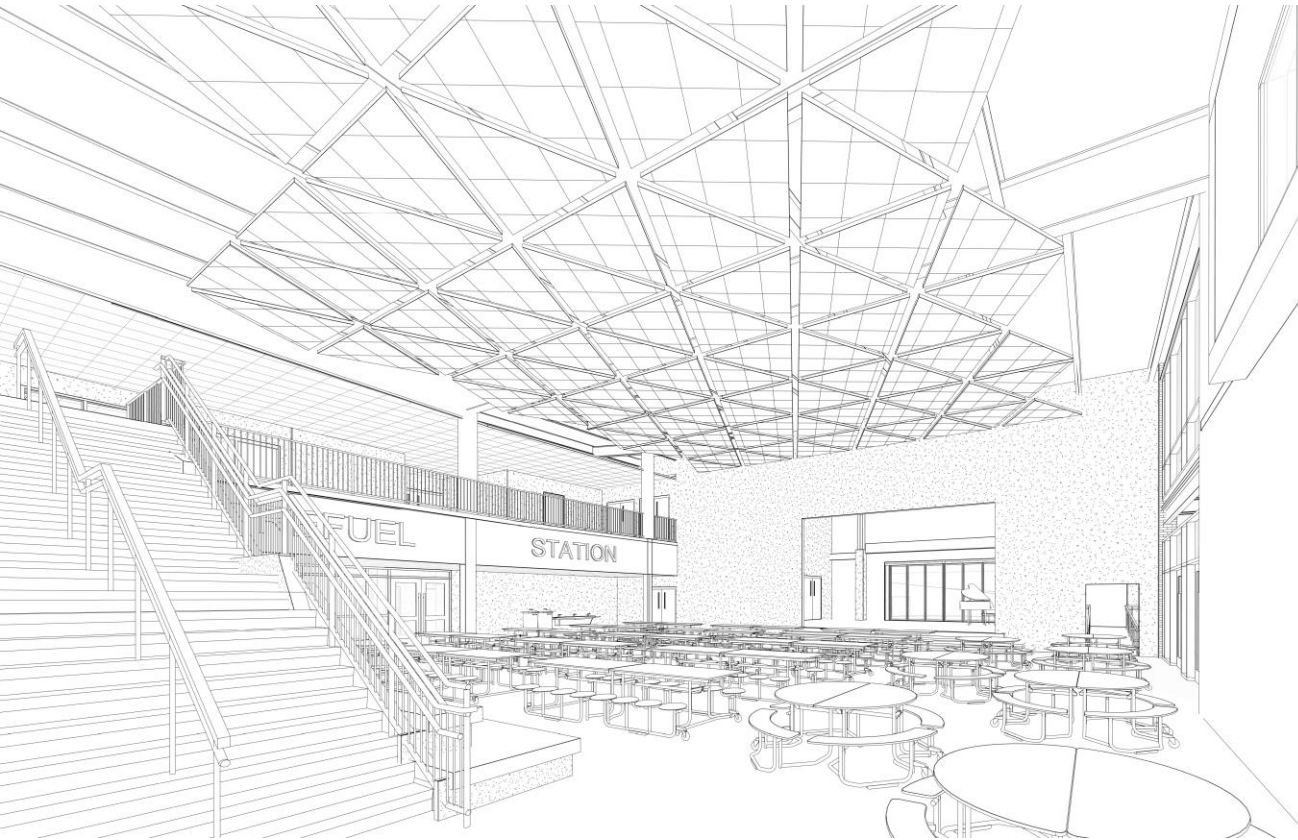


### Key section





# Progress Interior Views

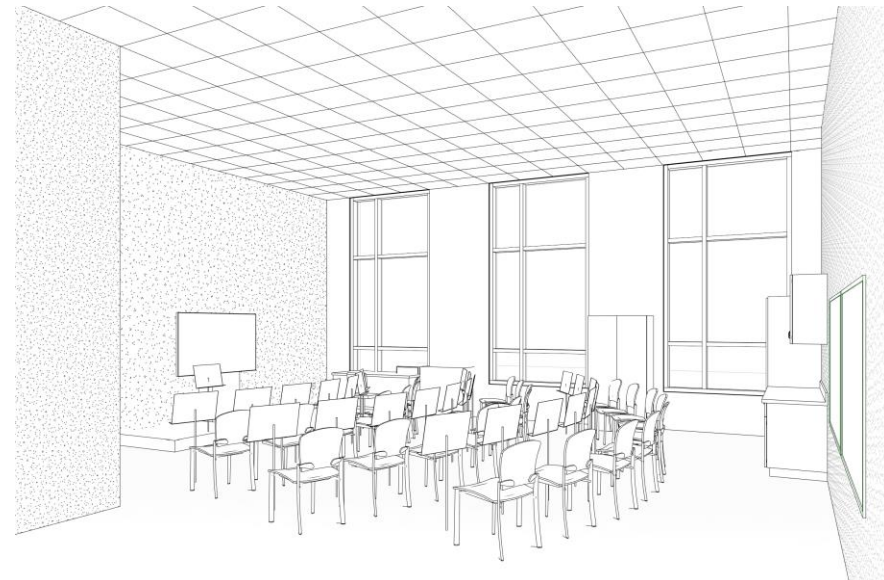


Cafeteria

- Final finishes to be coordinated with school.



Library



Music Room

# Elevations and Renderings



Note: Design is subject to change



# Elevations and Renderings



Note: Design is subject to change



# Elevations and Renderings



Note: Design is subject to change

# Open Discussion

# Next Meetings



# For more information, please contact:



Jam Kendrick

[pg\\_jam.kendrick@pgcps.org](mailto:pg_jam.kendrick@pgcps.org)