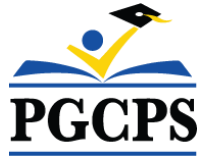




PGCPS . **ENGAGE . DESIGN . BUILD . COMMUNICATE** . PGCPS



ROBERT FROST K-8 SCHOOL

PROJECT PLANNING COMMITTEE MEETING #1 | SEPTEMBER 27, 2024





Agenda

- Team Introduction
- Transportation Management Plan
- Design Updates
- Open Discussion
- Next Meetings
- Contact

Team Introductions



Jeff Barr
PLENARY
Registered Representative

Hafeez Habib
PLENARY
Equity Members' Lead Project Manager

Brett Sullivan
PLENARY
Associate

Adam Dunn
PLENARY
Assistant Project Manager

Jeremy Ebie
PHOENIX
Equity Members' Project Manager

Rob Summers
PHOENIX
Operating Partner

Peter Bullen
ELLISDON CAPITAL
Senior Director



Bill Beschoner
MCN
Construction Process Executive in Charge

Bassem Boustany
MCN
Principal

Yonas Menji
MCN
Lead Construction Manager

Rick Munford
MCN
Preconstruction Director



Sean O'Donnell
PERKINS EASTMAN
Design Process Executive In Charge & Lead Architect

Omar Calderon
PERKINS EASTMAN
Design Principal

Jack Chin
PERKINS EASTMAN
Project Manager



Pete Cambell
ELLISDON FS
Director, P3 Pursuits

Brandon Kelley
USF
Vice President

Johnathan Bolden
RSC
President



Mamo Assefa
Delon Hampton
President

James Gittens
Delon Hampton
Vice President



Connie Fan
LSG
Principal



Jam Kendrick
TB&A
Project Manager

TMP Recommendations

- Designate a Transportation Coordinator

A high-level school administrator would typically serve in the role of Transportation Coordinator. The Transportation Coordinator acts as a liaison between the school, the community and DPW+T/DPIE to address any operational concerns that arise. The implementation or elimination of TMP strategies would occur under their supervision as would designation of staff to assist in daily tasks associated with the TMP.

- Stagger School Beginning and End Times

This facility is unique as it will serve a large student population of both elementary and middle school students. The TIS considered a single time for arrival and dismissal, but if separate times are used delays and queuing could be significantly reduced.

- Utilize a Crossing Guard/Police Officer at the Intersection of Good Luck Rd at Lamont Dr.

The TIS showed that vehicular delay can be high during peak arrival and dismissal periods at the off-site intersection. The utilization of a crossing guard or police officer would assist in allowing vehicular traffic to exit the site more efficiently. In addition, safety benefits would be realized as pedestrians crossing Lamont Drive or Good Luck Road would be aided.

- Utilize a Crossing Guard On-Site

The uncontrolled flow of pedestrians at crosswalks on-site can reduce efficiency and create potential safety conflicts. Crossing guards should be stationed at all conflict points within the site to ensure children can safely enter and exit the property. Figure 7 shows potential locations for on-site crossing guards.

Figure 7 – Potential Crossing Guard Locations



- Assign Staff to Pick Up/Drop-off Locations

Assistance in helping younger children out of personal vehicles in morning can facilitate more efficiency in the drop-off queue. In addition, staff can provide direction to drivers so more than one drop-off can occur simultaneously.

During pick-up in the afternoon, staff could assist in matching students to vehicles which could significantly reduce waiting times.

- Provide Additional Queue Space On-Site

Additional vehicles queue within the pick-up line if double-stacking occurs. Cones are placed within the parking lot to divert traffic flow. This measure would only be necessary if queueing extends beyond the site boundary.

Figure 6 – Vehicle Storage Space



- Provide Clear Communication to Stakeholders

In order for safe, efficient operations on-site, it is necessary for stakeholders to understand the strategies that are being implemented. Communication should occur by way of emails, hand-outs to students or other means providing detailed instructions on arrival and dismissal procedures for vehicles and pedestrians, and prohibited actions such as drop-offs off-site.

- Establish Enforcement Parameters

Inevitably, there will be parents that attempt to avoid following the designated procedures and enforcement may need to occur. It likely would be as simple as the Transportation Coordinator reminding drivers of the preferred locations for pick-up and drop-off or alerting them to preferred strategies.

Site Plan

- Bus drop-off
- Vehicular parking
- Outdoor classroom and play areas



Note: Design is subject to change

Elevations and Renderings



Note: Design is subject to change

- Early childhood classrooms at grade
- Main entrance
- Heart of the School



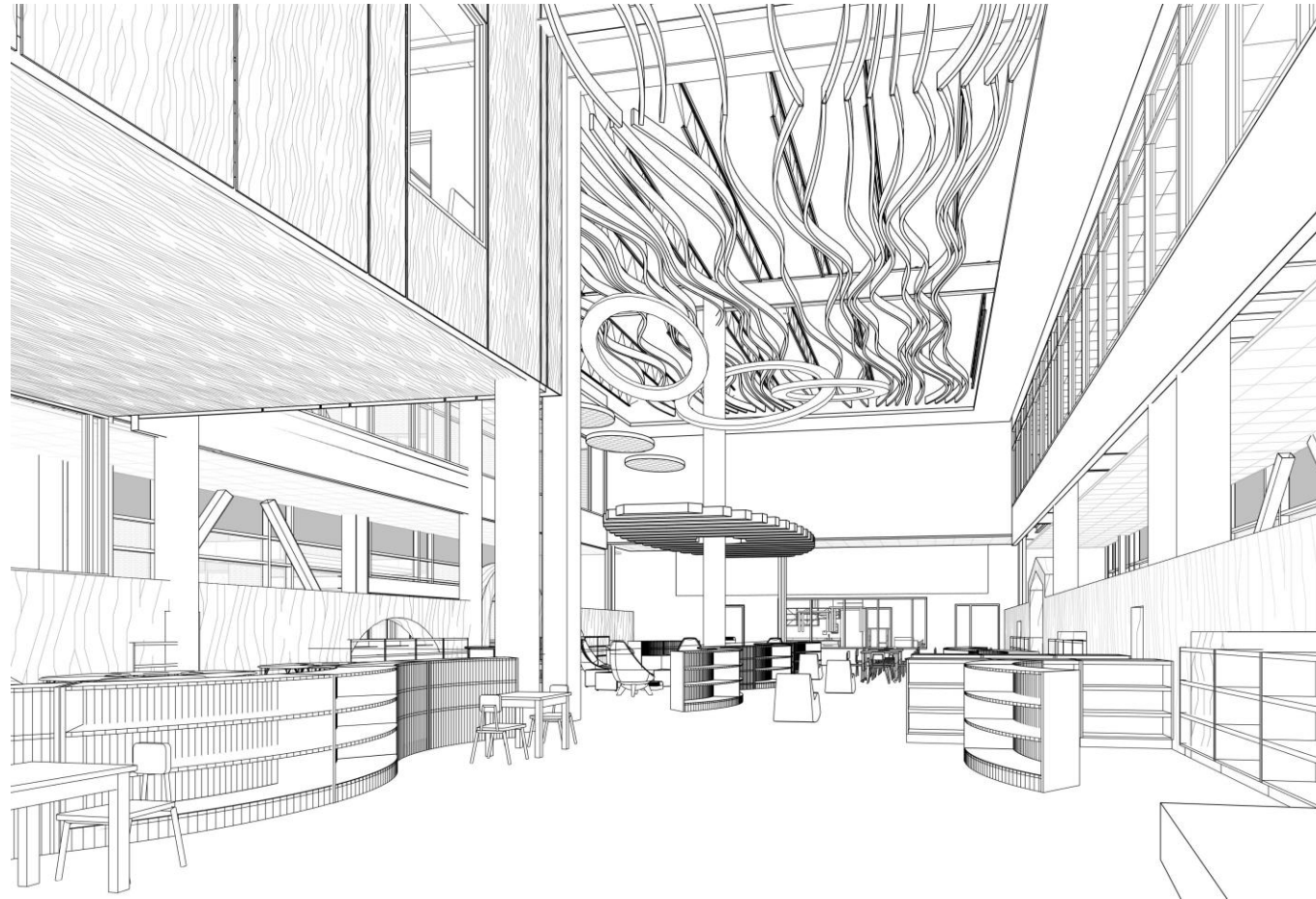
DEPARTMENT

- ACADEMIC - CORE
- ACADEMIC - EXTENDED
- ADMINISTRATION
- CIRCULATION
- MEDIA CENTER
- PERF ARTS
- PHYS ED
- SPEC ED
- SUPPORT
- VISUAL ARTS

Note: Design is subject to change



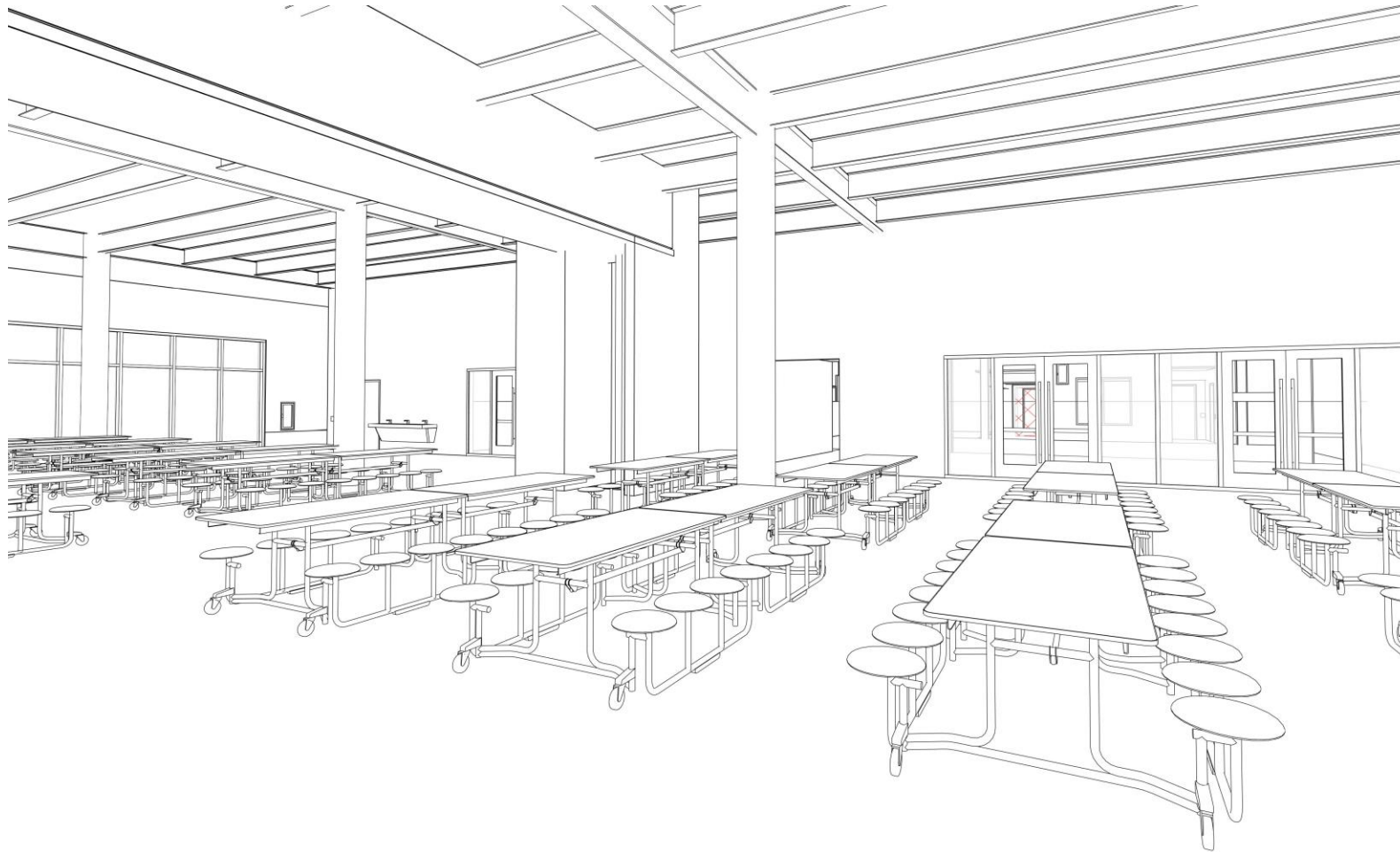
Progress Interior Views



Library

- Final finishes to be coordinated with school.

Progress Interior Views

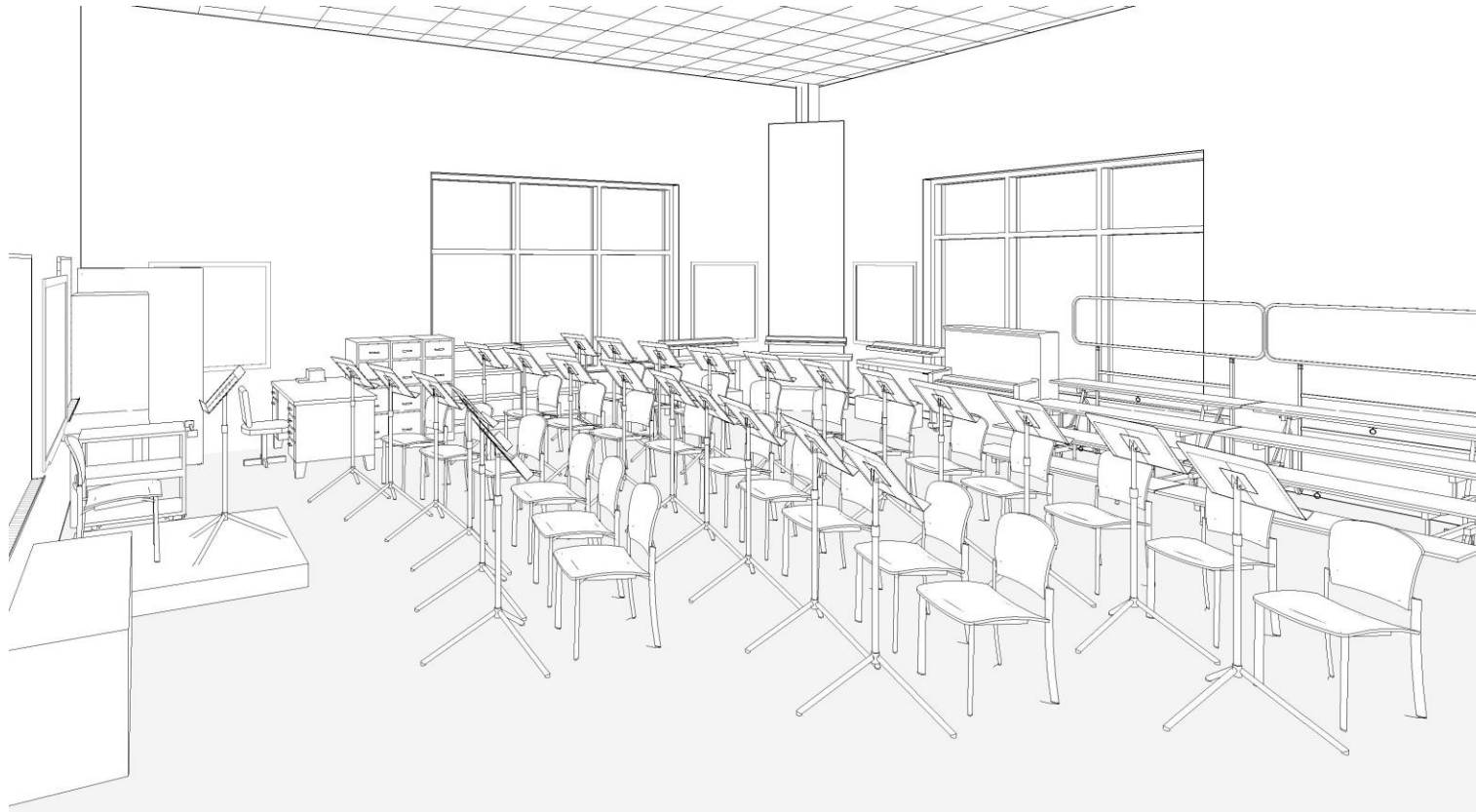


Cafeteria

- Final finishes to be coordinated with school.

Note: Design is subject to change

Progress Interior Views



Music Room

- Final finishes to be coordinated with school.



Heart of the School:

- Main Entrance
- Community Entrance
- Library
- Dining

DEPARTMENT

- ACADEMIC - CORE
- ACADEMIC - EXTENDED
- ADMINISTRATION
- CIRCULATION
- MEDIA CENTER
- PERF ARTS
- PHYSED
- SPEC ED
- SUPPORT
- VISUAL ARTS



- Elementary and Middle School zones
- Athletics

DEPARTMENT

	ACADEMIC - CORE
	ACADEMIC - EXTENDED
	ADMINISTRATION
	CIRCULATION
	MEDIA CENTER
	PERF ARTS
	PHYS ED
	SPEC ED
	SUPPORT
	VISUAL ARTS



Note: Design is subject to change





Heart of the School:

- Library (below)
- Gym/Stage

DEPARTMENT

	ACADEMIC - CORE
	ACADEMIC - EXTENDED
	ADMINISTRATION
	CIRCULATION
	MEDIA CENTER
	PERF ARTS
	PHYS ED
	SPEC ED
	SUPPORT
	VISUAL ARTS

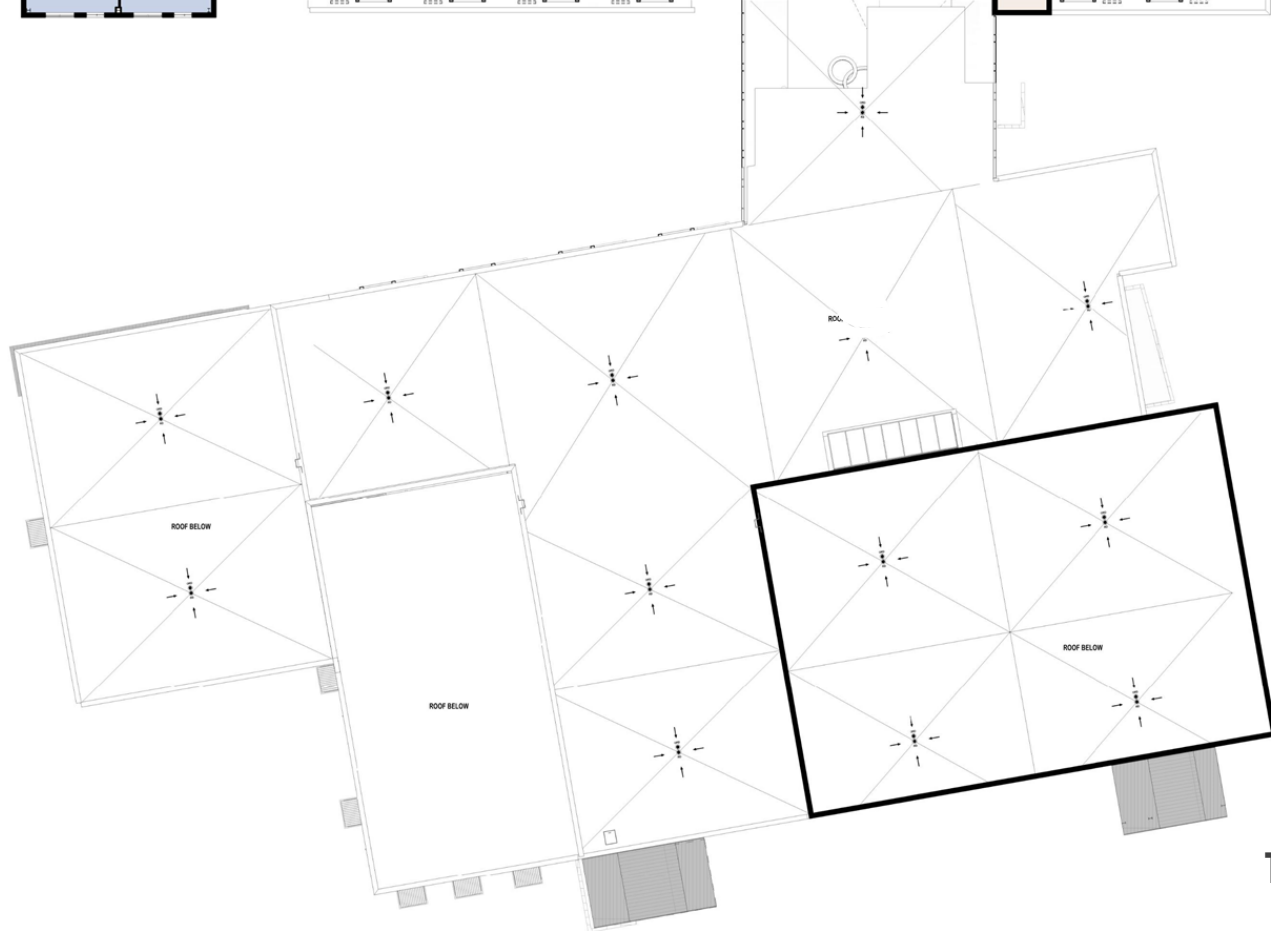


- Upper grade classrooms
- Elementary and Middle School zones



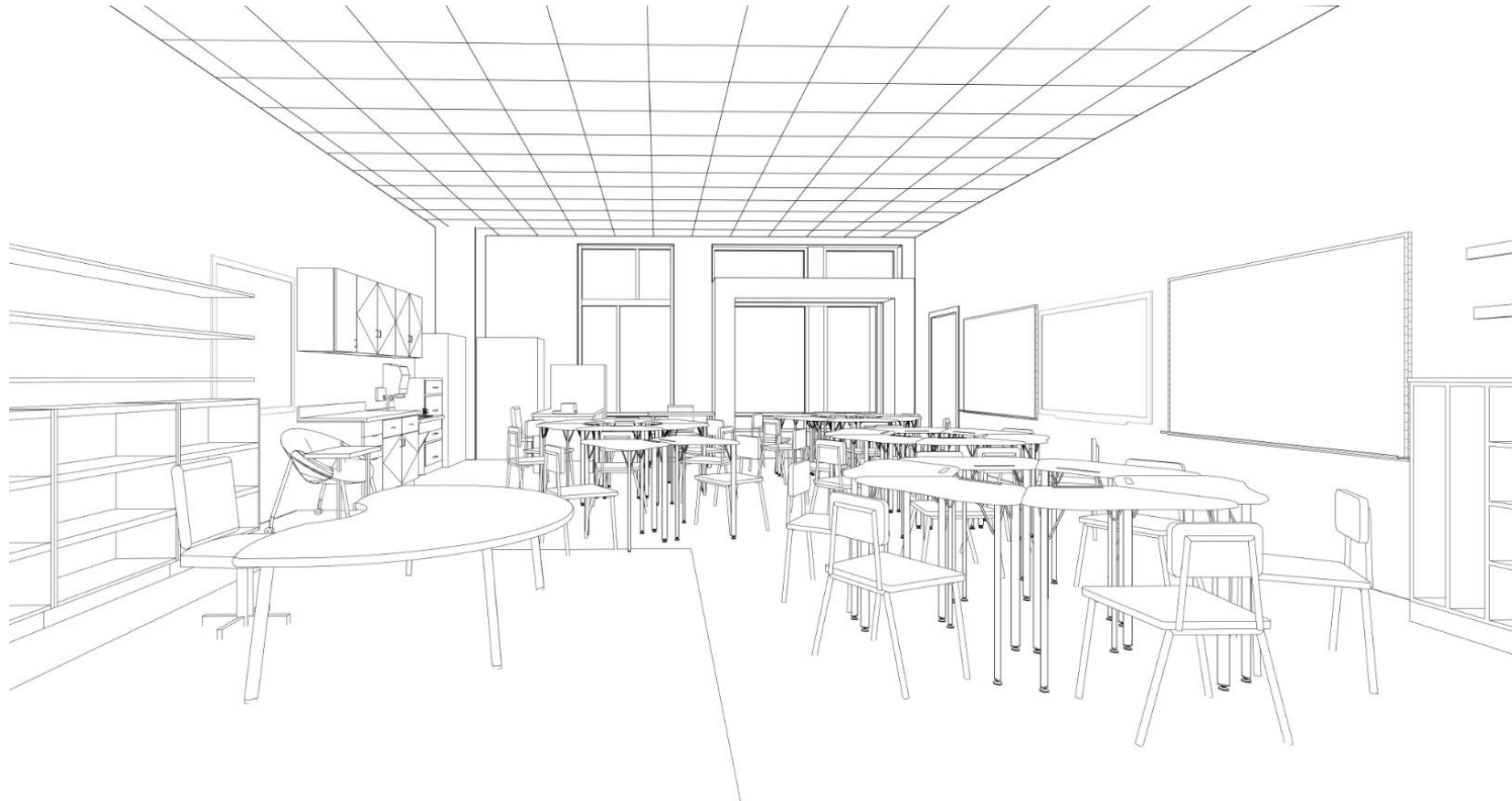
DEPARTMENT

- ACADEMIC - CORE
- ACADEMIC - EXTENDED
- ADMINISTRATION
- CIRCULATION
- MEDIA CENTER
- PERF ARTS
- PHYS ED
- SPEC ED
- SUPPORT
- VISUAL ARTS



Note: Design is subject to change

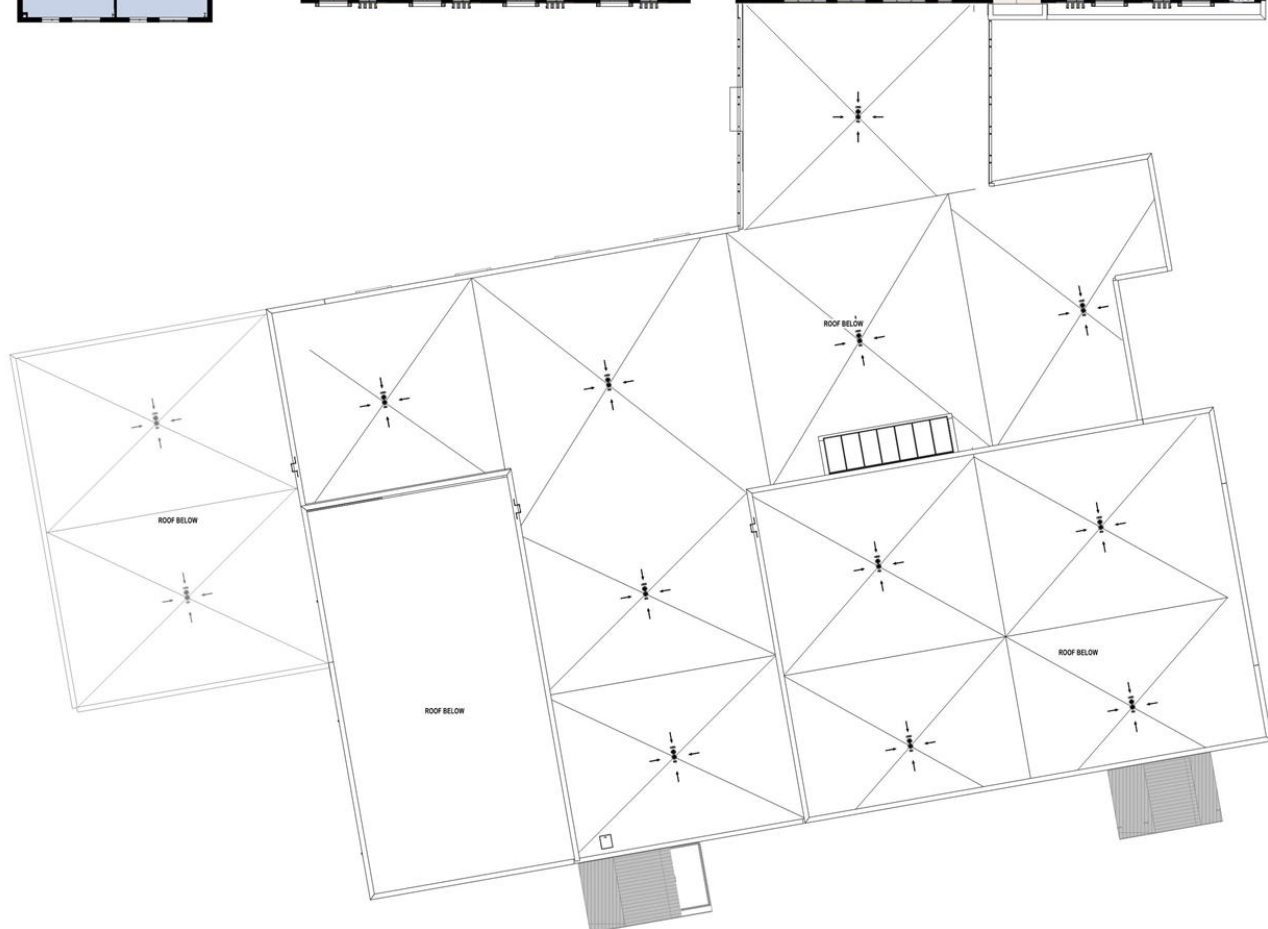
Progress Interior Views



Classroom

- Final finishes to be coordinated with school.

- Upper grade classrooms
- Elementary and Middle School zones



DEPARTMENT

Blue	ACADEMIC - CORE
Light Blue	ACADEMIC - EXTENDED
Purple	ADMINISTRATION
Light Orange	CIRCULATION
Cyan	MEDIA CENTER
Orange	PERF ARTS
Dark Orange	PHYS ED
Light Blue-Gray	SPEC ED
Gray	SUPPORT
Dark Blue	VISUAL ARTS

Note: Design is subject to change

Elevations and Renderings



Note: Design is subject to change

Open Discussion

Next Meetings

For more information, please contact:



Jam Kendrick

pg_jam.kendrick@pgcps.org