



PGCPS . **ENGAGE . DESIGN . BUILD . COMMUNICATE** . PGCPS



ROBERT FROST K-8 SCHOOL

PROJECT PLANNING COMMITTEE MEETING #3 | JANUARY 30, 2025





Agenda

- Design Recap
- Construction Updates
- Open Discussion
- Contact

Design Recap

- No design changes since last meeting.
- Building permitting process will begin in the next few weeks.
- Demolition / Site Work has begun (more info in latter slides).
- Interior design (Furniture, Finishes and Equipment) is ongoing. Coordination with school needed.
- Pricing for taller guardrails is in progress.
- Writable walls in science to be discussed.

Site Plan

- Bus drop-off
- Vehicular parking
- Outdoor classroom and play areas



Elevations and Rendering Updates



View of Community Entrance



View of Main Entrance



View of Outdoor Learning

- Early childhood classrooms at grade
- Main entrance
- Heart of the School

DEPARTMENT

	ACADEMIC - CORE
	ACADEMIC - EXTENDED
	ADMINISTRATION
	CIRCULATION
	MEDIA CENTER
	PERF ARTS
	PHYS ED
	SPEC ED
	SUPPORT
	VISUAL ARTS



Note: Design is subject to change



- Elementary and Middle School zones
- Athletics



DEPARTMENT

ACADEMIC - CORE
ACADEMIC - EXTENDED
ADMINISTRATION
CIRCULATION
MEDIA CENTER
PERF ARTS
PHYS ED
SPEC ED
SUPPORT
VISUAL ARTS

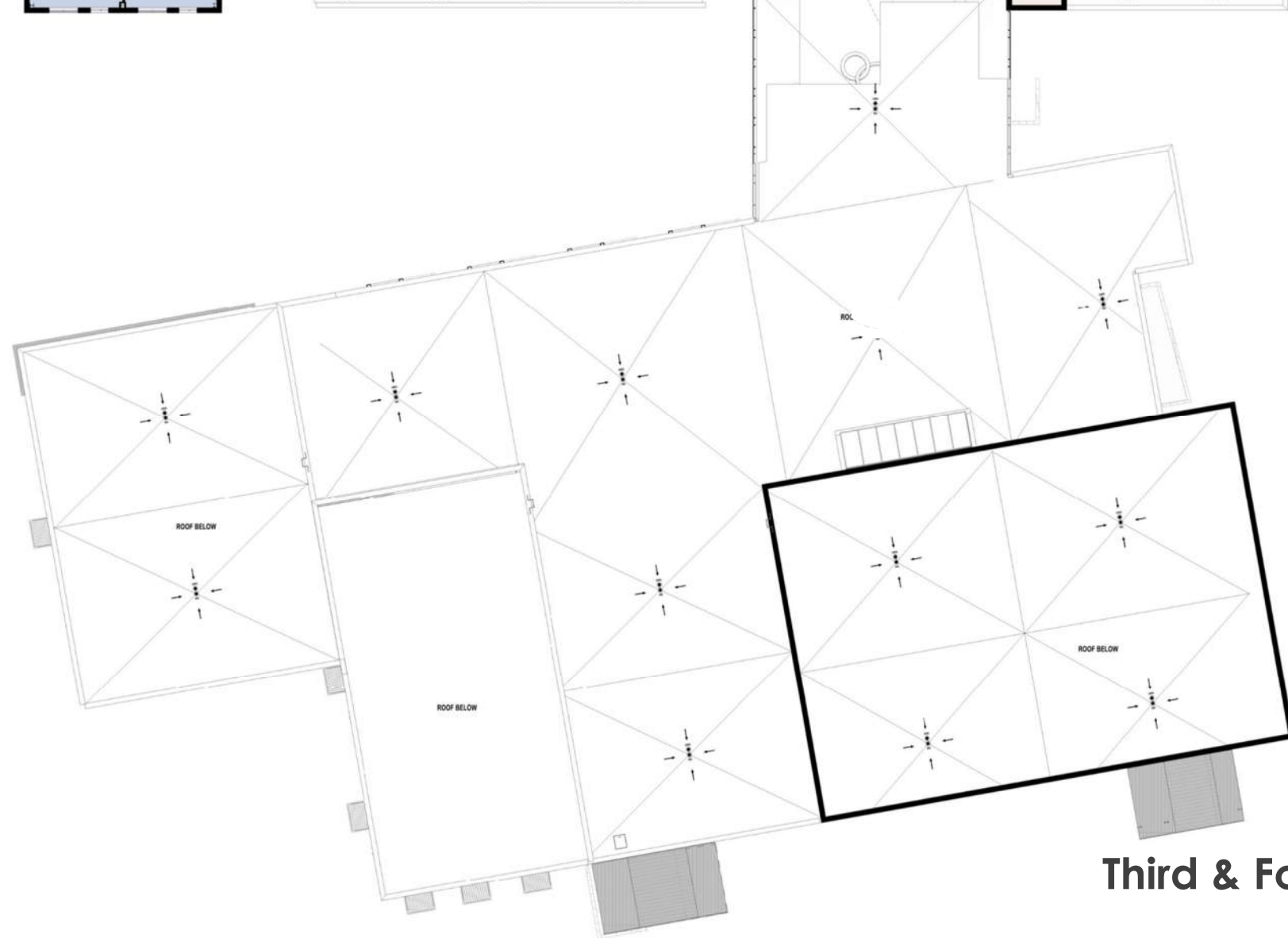
Note: Design is subject to change

- Upper grade classrooms
- Elementary and Middle School zones



DEPARTMENT

ACADEMIC - CORE
ACADEMIC - EXTENDED
ADMINISTRATION
CIRCULATION
MEDIA CENTER
PERF ARTS
PHYS ED
SPEC ED
SUPPORT
VISUAL ARTS

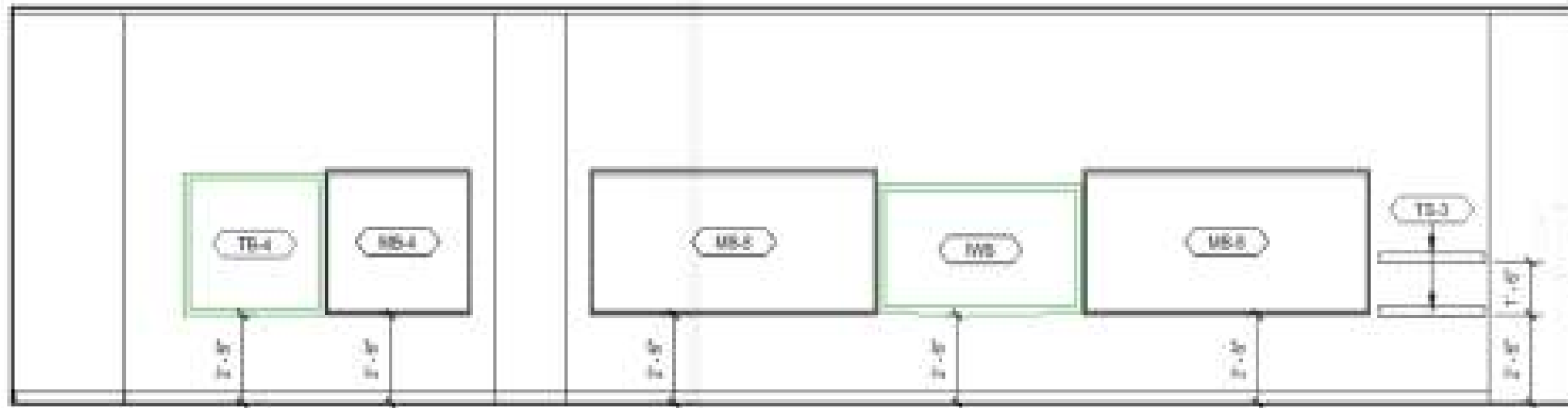


Third & Fourth Level Plan

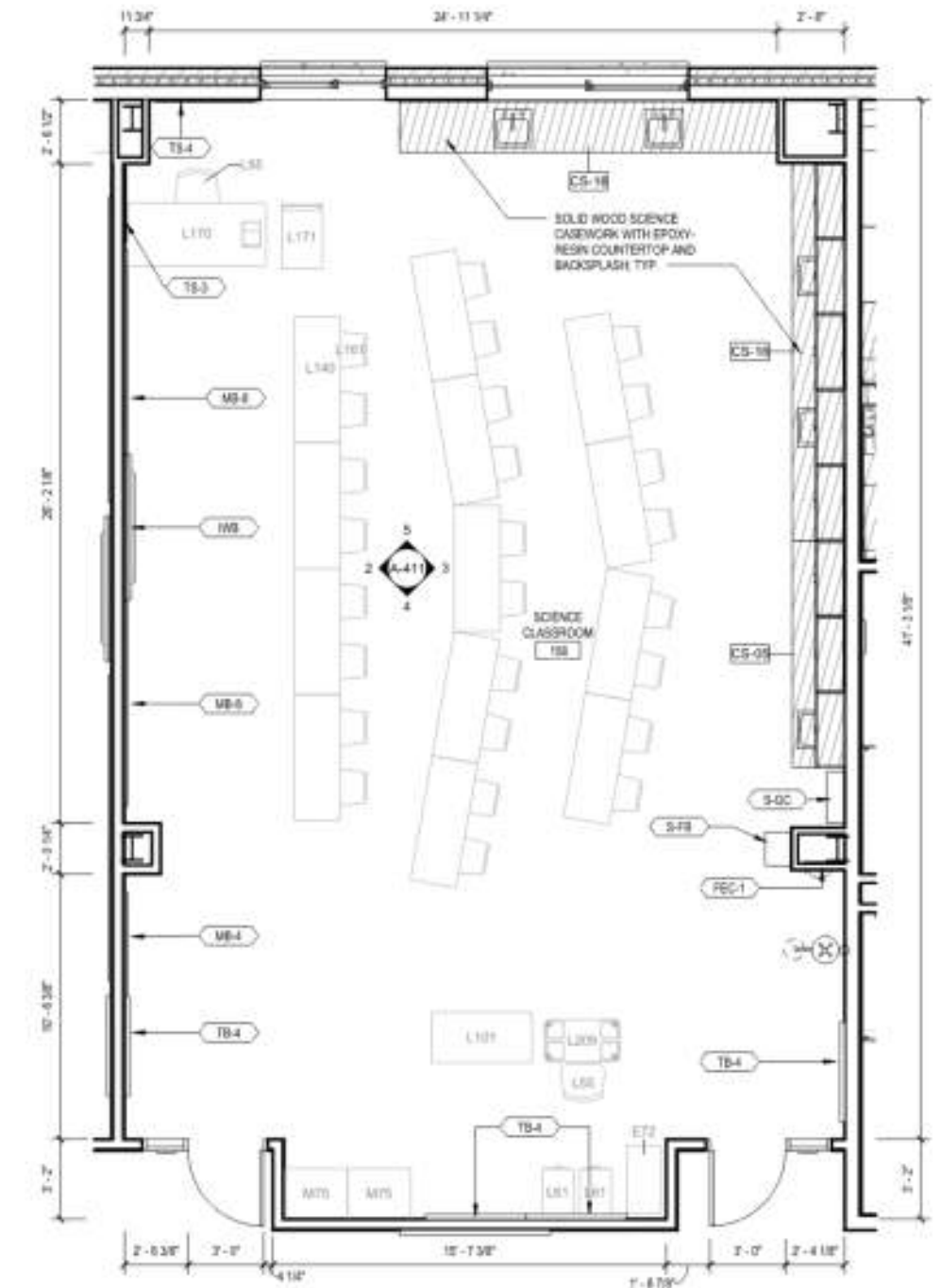
Note: Design is subject to change

Writable Walls

- Concerns about durability and maintenance
- Suggest using large, frameless, marker boards as alternative



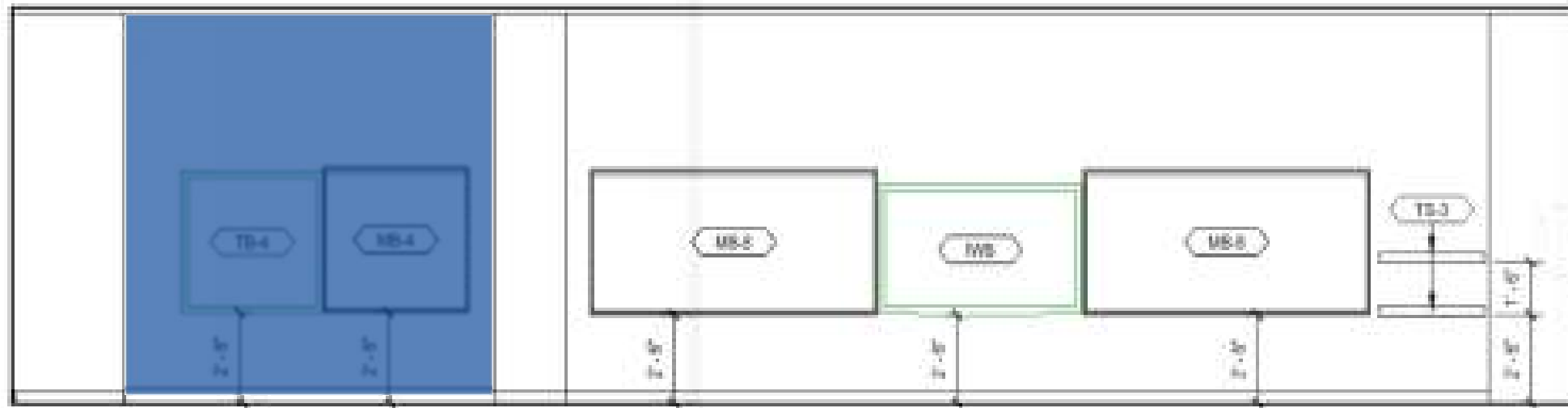
Typical Science Teaching Wall Elevation



Typical Science Classroom Plan

Writable Walls

- Concerns about durability and maintenance
- Suggest using large, frameless, marker boards as alternative

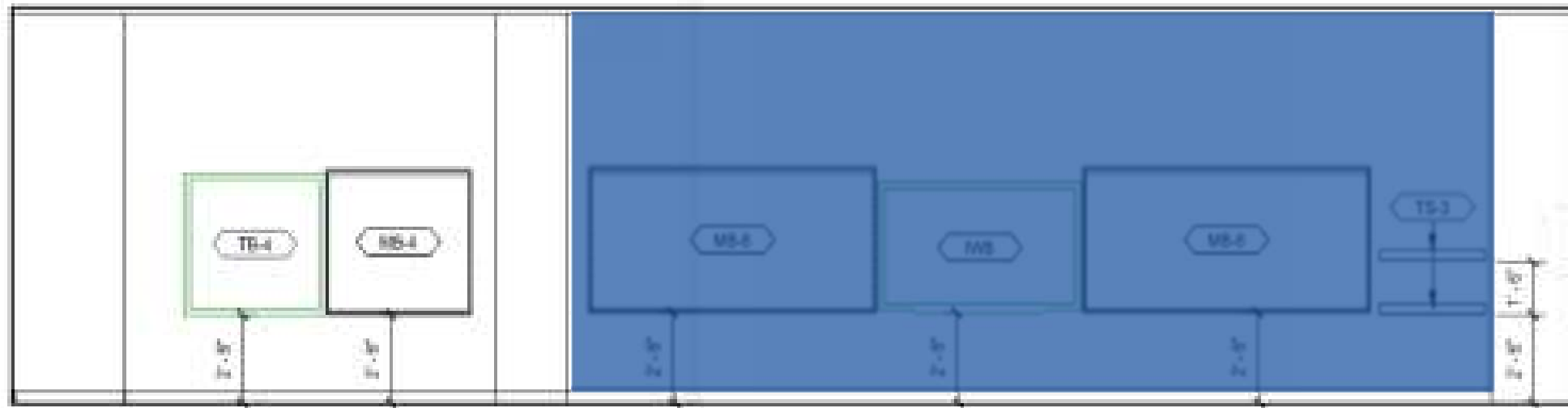


Typical Science Teaching Wall Elevation

Typical Science Classroom Plan

Writable Walls

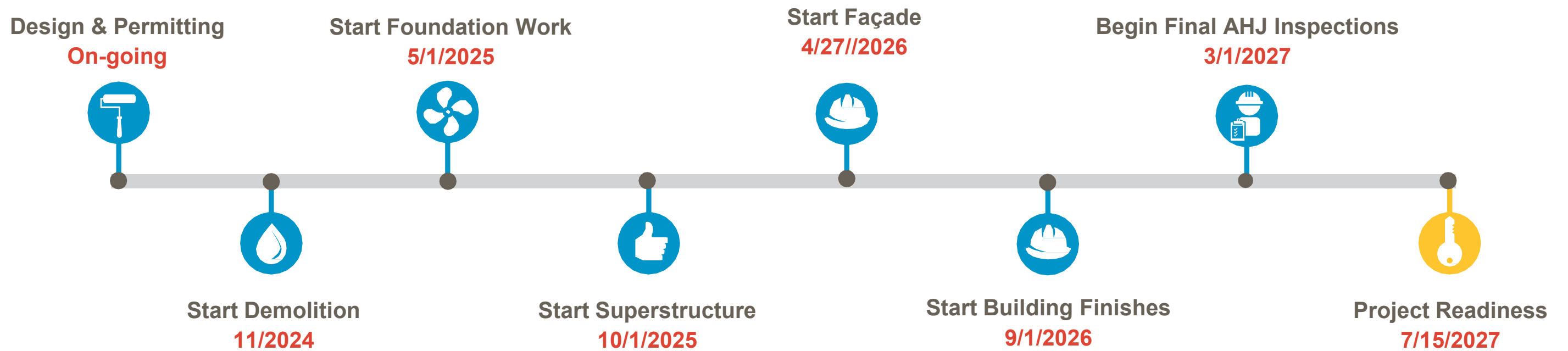
- Concerns about durability and maintenance
- Suggest using large, frameless, marker boards as alternative



Typical Science Teaching Wall Elevation

Typical Science Classroom Plan

Schedule Overview



Activities completed

- Establish preliminary Site controls
- Raze of existing building
- Phase 1 Earthwork
- Phase 1 – Tree Conservation Plan
- Set-up Temp power for construction

Progress Pictures



Progress Pictures



Upcoming Activities (next 6 weeks)

- Demo building foundations
- Complete Ph-1 Earthwork and begin Ph-2
- Begin Geothermal Wells Installation
- Storm and Sanitary relocation onsite

Open Discussion

For more information, please contact:



Jam Kendrick

pg_jam.kendrick@pgcps.org

pepblueprintschoolsp3.com

